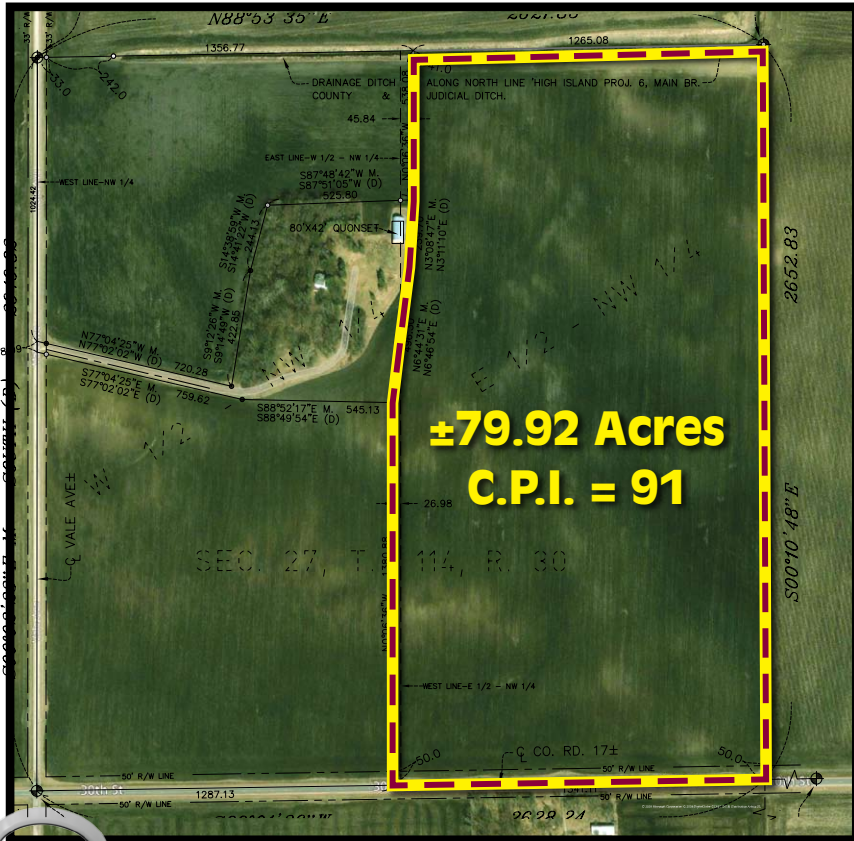


Prime McLeod County Farmland

AUCTION

STEWART, MN • MONDAY, NOVEMBER 12, 2018 • 3:00 P.M.

±79.92 Acres Located in Section 27, Round Grove Twp, T-114-N, R-30-W



- **CROP PRODUCTIVITY INDEX - 91**
- **COUNTY DRAINAGE DITCH NORTH SIDE OF PARCEL**
- **TAR ROAD ACCESS!**

LAND LOCATION:

Stewart, MN: Seven miles south & east on County Road 7 & 17. Farm on north side of road. **Brownton, MN:** Five miles south on Highway 15, 2 3/4 miles west on County Road 17, north side of road. (Watch for Henslin Auction Signs!)

±79.92 Acres of McLeod Co. Farm Land Located in Section 27, Round Grove Twp., T-114-N, R-30-W. Land will be Sold on a Per Deeded Acre Basis.

AUCTION HELD AT:
Brownton Community Center
 310 2nd St. N. • Brownton, MN

FOR MORE LAND INFO, AERIAL PHOTOS & VIDEO, VISIT US AT WWW.HENSLINAUCTIONS.COM

ALICE BREDE TRUST

ARTHUR BREDE ESTATE



Allen Henslin 65-57
 Cell: 320-979-1808
 LaDon Henslin
 Brad Dallmann
 Frank Roering
 Cell: 320-760-2979
 REAL ESTATE AGENT
 Laura Posl
 Cell: 320-262-4893

Henslin Real Estate and Land, LLC Broker • Lic. #40452768

FOLLOW US



CALL HENSLIN AUCTIONS FOR LAND BOOKLET TODAY! (320) 365-4120

Auction Terms: To attend auction and receive a bidding number, buyers must present auction company with certified funds of \$25,000. These funds will be required as a non-refundable earnest monies for this parcel at the signing of the purchase agreement immediately following the auction. Possession will be granted after the 2018 crop has been removed. Buyer's Premium will apply. Kraft Walsler will be the seller's closing attorney. Closing will be on or before Monday, December 10, 2018. For more information, aerial drone videos and pictures, visit us at www.henslinauctions.com or call (320) 365-4120.

www.henslinauctions.com

Designed and Printed by the Cannon Falls Beacon 800.263.3991