

Atwater, MN

Auction

ABSOLUTE LAND AUCTION! SELLS NO MINIMUMS, NO RESERVES!

MONDAY, DECEMBER 18, 2017 • 11:00 A.M.

**±52.66 Acres of Meeker
County Farm Land and
Small Gravel Pit Located in
Swede Grove Plat Sections
19 & 30, T-120-N, R-32-W**

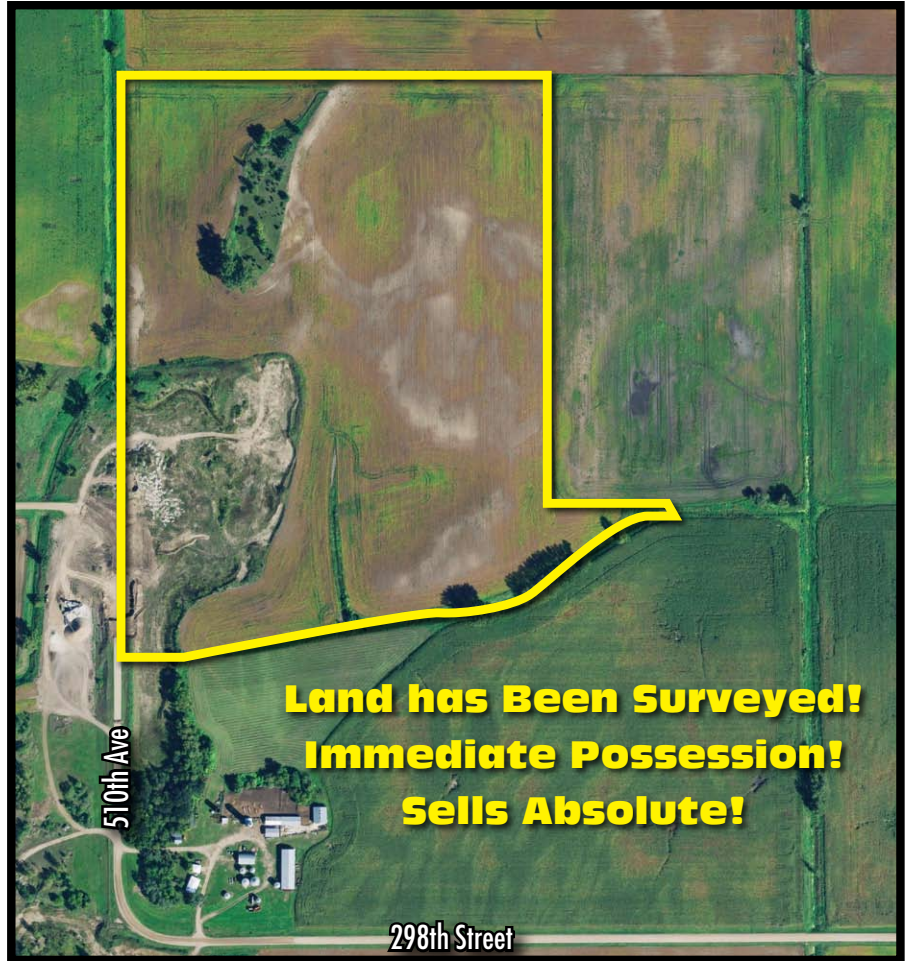
LAND LOCATION:

Atwater, MN - Two miles east of Atwater
on U.S. Highway 12, then 2.5 miles north
on 515th Avenue, 1/2 mile west on
298th street, 1/4 mile north
(Watch for Henslin Auction Signs)

**Land Has Been Surveyed!
Immediate Possession**

AUCTION TO BE HELD AT:

Atwater Community Center
107 2nd Street North • Atwater, Mn
(Watch for Henslin Auction Signs)



**Land has Been Surveyed!
Immediate Possession!
Sells Absolute!**

**FOR MORE LAND INFO, AERIAL
PHOTOS & VIDEO, VISIT US AT
WWW.HENSLINAUCTIONS.COM**

DOUGLAS ANDERSON -ESTATE-



Bird Island, MN (320) 365-4120

Allen Henslin 65-57
Cell: 320-979-1808

LaDon Henslin
Brad Dallmann
Frank Roering

Real Estate Agent
Laura Posl

Broker: Henslin Real Estate and Land, LLC • Lic. #40452768

FOLLOW US



CALL HENSLIN AUCTIONS FOR LAND BOOKLET TODAY! (320) 365-4120

Auction Terms: To attend auction and receive a bidding number, buyer's must present auction company with certified funds of \$10,000. This money will be required as a non-refundable down payment when signing the purchase agreement immediately following the auction. Buyer's Premium will apply. Wood & Rue, PLLP, will be seller's closing attorney. For more information, aerial drone videos and pictures, visit us at www.henslinauctions.com

www.henslinauctions.com

Designed and Printed by the Cannon Falls Beacon 800.263.3991