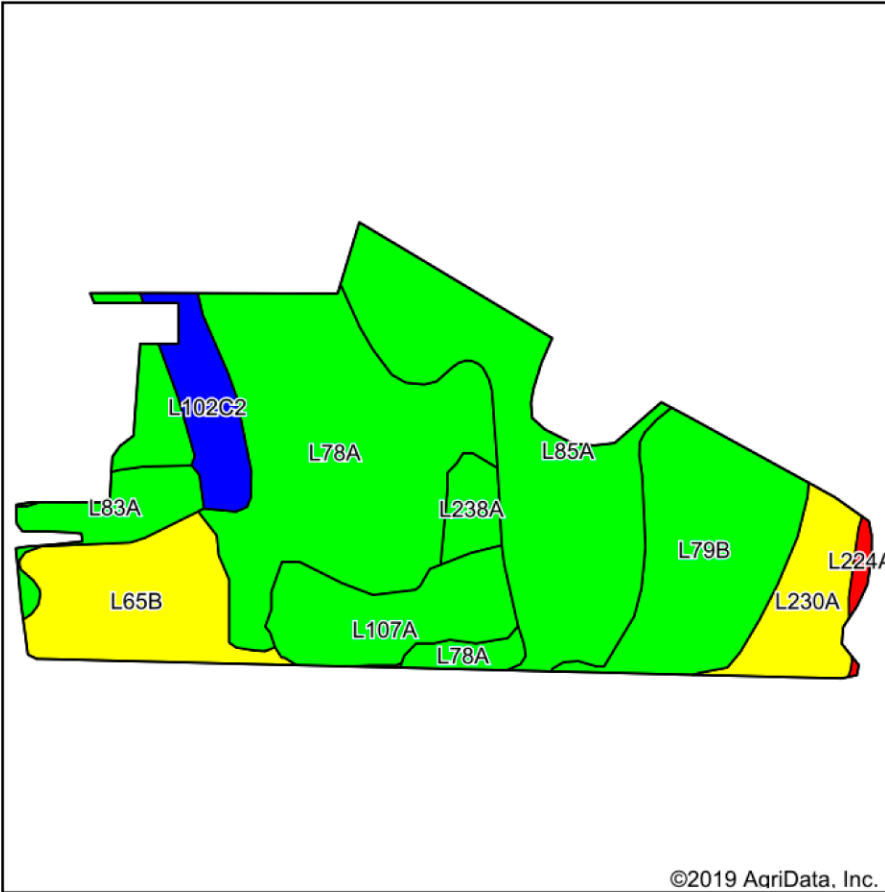
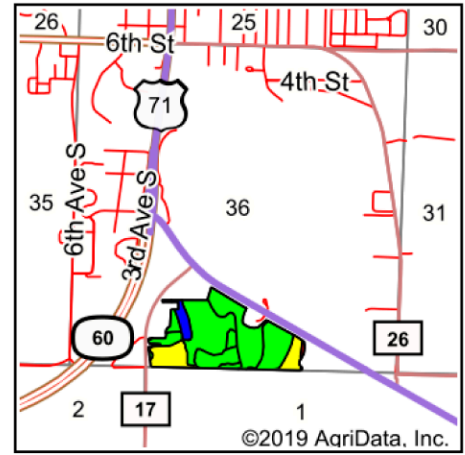


Soils Map



©2019 AgriData, Inc.



State: **Minnesota**
 County: **Cottonwood**
 Location: **36-105N-36W**
 Township: **Windom**
 Acres: **49.08**
 Date: **1/23/2019**



Maps Provided By:



© AgriData, Inc. 2019

www.AgriDataInc.com



Soils data provided by USDA and NRCS.

Area Symbol: MN033, Soil Area Version: 19									
Code	Soil Description	Acres	Percent of field	PI Legend	Non-Irr Class *c	Productivity Index	Cor n	Soybeans	*n NCCPI Soybeans
L78A	Canisteo clay loam, 0 to 2 percent slopes	13.30	27.1%	Green	IIw	93			79
L85A	Nicollet clay loam, 1 to 3 percent slopes	10.23	20.8%	Green	Iw	99			78
L79B	Clarion loam, 2 to 6 percent slopes	6.89	14.0%	Green	Ile	95			83
L65B	Augusta Lake fine sandy loam, 1 to 6 percent slopes	5.12	10.4%	Yellow	IIIe	70	129	39	53
L107A	Canisteo-Glencoe complex, 0 to 2 percent slopes	3.93	8.0%	Green	IIw	91			79
L230A	Biscay clay loam, loamy substratum, 0 to 2 percent slopes	2.90	5.9%	Yellow	IIw	70	129	39	62
L102C2	Clarion-Storden complex, 6 to 10 percent slopes, moderately eroded	2.18	4.4%	Blue	IIIe	87			65
L83A	Webster clay loam, 0 to 2 percent slopes	1.95	4.0%	Green	IIw	93			80
L227B	Truman silt loam, 2 to 6 percent slopes	1.28	2.6%	Green	Ile	99			88
L238A	Webster-Delft complex, 0 to 2 percent slopes	1.02	2.1%	Green	IIw	94			78
L224A	Coland clay loam, 0 to 2 percent slopes, frequently flooded	0.28	0.6%	Red	Vw	20			22
Weighted Average						90.1	21.1	6.4	*n 74.9

*n: The aggregation method is "Weighted Average using major components"

*c: Using Capabilities Class Dominant Condition Aggregation Method

Soils data provided by USDA and NRCS.