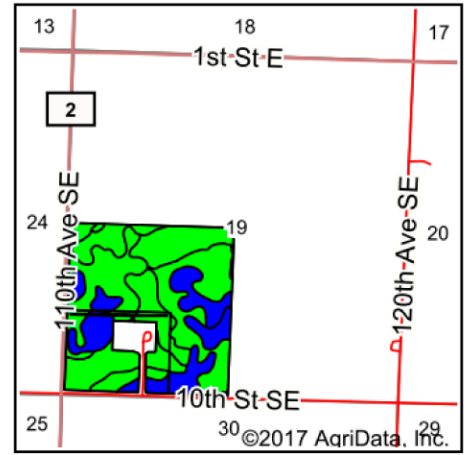
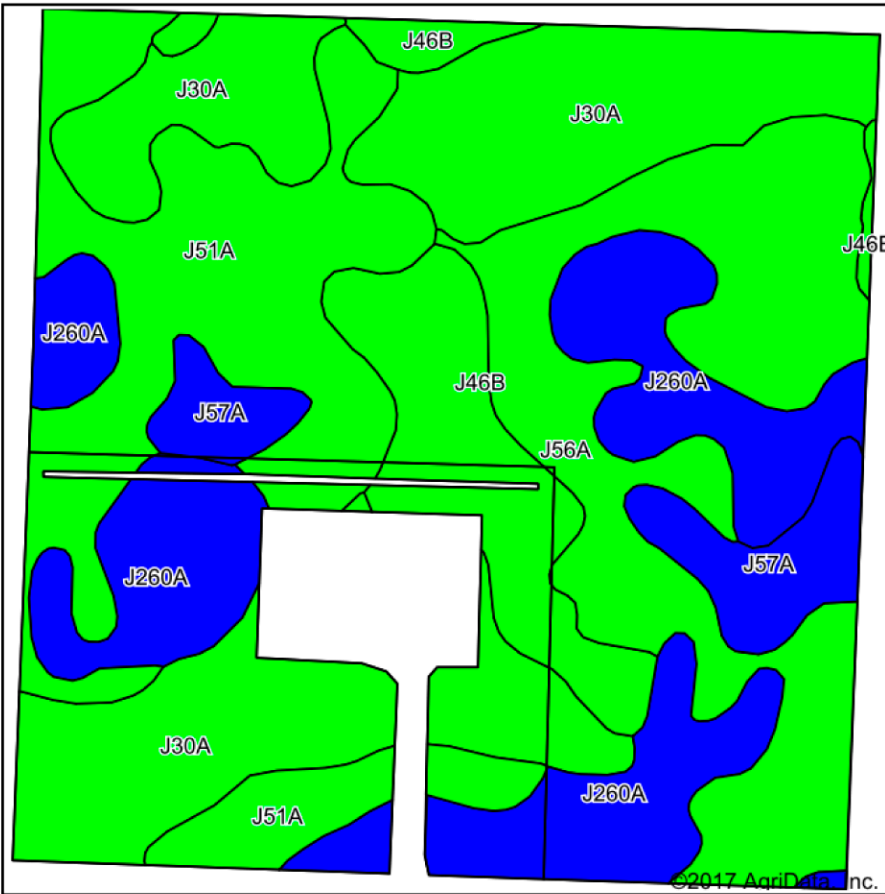


# Soils Map



State: **Minnesota**  
 County: **Chippewa**  
 Location: **19-118N-37W**  
 Township: **Lone Tree**  
 Acres: **142.45**  
 Date: **9/27/2017**



Maps Provided By:



Soils data provided by USDA and NRCS.

©2017 AgriData, Inc.

© AgriData, Inc. 2017

www.AgriDataInc.com

Area Symbol: MN023, Soil Area Version: 19

Code	Soil Description	Acres	Percent of field	PI Legend	Non-Irr Class *c	Productivity Index	Bromegrass alfalfa hay	Corn	Oats	Soybeans	Spring wheat
J30A	Tara silt loam, 1 to 3 percent slopes	37.40	26.3%		Ie	99					
J51A	Bearden-Quam, depressional, complex, 0 to 2 percent slopes	29.02	20.4%		IIs	91	4	159	79	50	56
J56A	Winger-Balaton-Parnell, depressional, complex, 0 to 3 percent slopes	28.11	19.7%		IIW	91	4.1	158	79	50	54
J260A	Colvin-Quam complex, depressional, 0 to 1 percent slopes	27.18	19.1%		IIIW	86	3.5	150	73	47	51
J46B	Byrne silt loam, 2 to 4 percent slopes	13.32	9.4%		Ile	98	4.7	170	83	54	57
J57A	Balaton-Hamerly complex, 1 to 4 percent slopes	7.42	5.2%		IIs	89					
<b>Weighted Average</b>						<b>92.7</b>	<b>2.7</b>	<b>108.1</b>	<b>53.4</b>	<b>34.1</b>	<b>37.1</b>

\*c: Using Capabilities Class Dominant Condition Aggregation Method

Soils data provided by USDA and NRCS.