

PRIME MULTI-PARCEL SWIFT CO. FARM LAND

AUCTION

KERKHOVEN/MURDOCK, MN • WEDNESDAY, NOVEMBER 1, 2017 • 11:00 A.M.

**±180.99 ACRES LOCATED IN SECTION 33 & SECTION 34,
KERKHOVEN TOWNSHIP, T-122-N, R-37-W, SWIFT COUNTY**

LAND LOCATION:

Kerkhoven, MN: Nine miles north on County Road 35, west on 20th St, north side of the road. (Watch for Henslin Auction Signs!)

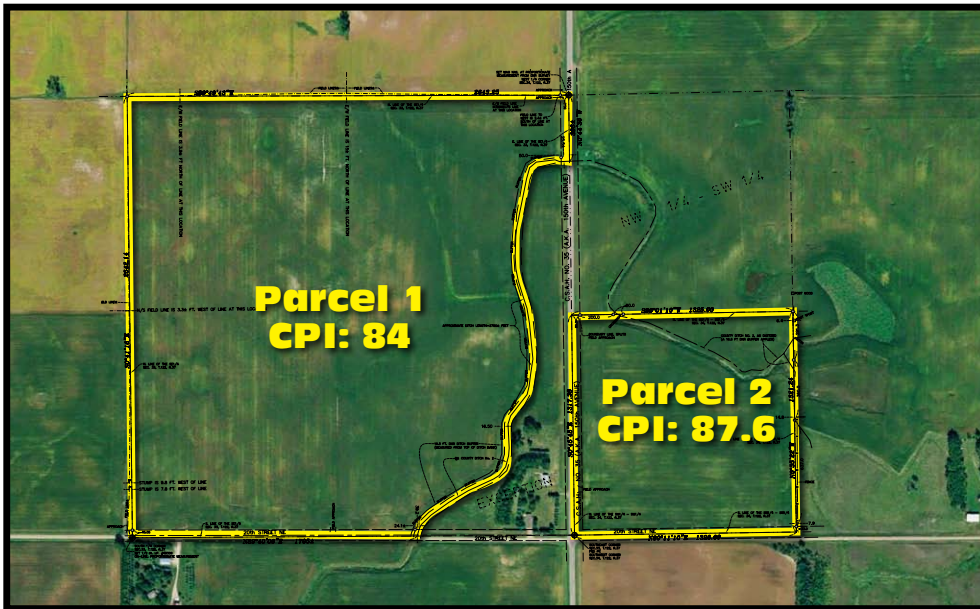
LAND HAS BEEN SURVEYED!!

PARCEL 1:

140.8 Acres Located in Section 33, Kerkhoven Twp, Swift Co. C.P.I. Rating = 84

PARCEL 2:

40.19 Acres Located in Section 34, Kerkhoven Twp, Swift Co. C.P.I. Rating = 87.6



AUCTION LOCATION:

McKinney's
ON SOUTHSIDE
300 14th St. • Benson, MN 56215
Watch for Henslin Auction Signs!



**FOR MORE LAND INFORMATION,
AERIAL PHOTOS & VIDEO, VISIT US
AT WWW.HENSLINAUCTIONS.COM**

JERRY D. HENRY ESTATE

Ellamae Henry, Owner



Allen Henslin 65-57
Cell: 320-979-1808
LaDon Henslin
Brad Dallmann
Frank Roering
Real Estate Agent
Laura Posl

FOLLOW US



CALL HENSLIN AUCTIONS FOR LAND BOOKLET TODAY! (320) 365-4120

Auction Terms: To attend auction and receive a bidding number, buyer's must present auction company with certified funds of \$25,000. This money will be required as a non-refundable down payment for each parcel when signing the purchase agreement(s) immediately following the auction. Possession of the land will be granted after the 2017 crop has been removed. Buyer's Premium will apply. For more information, aerial drone videos and pictures, visit us at www.henslinauctions.com

www.henslinauctions.com

Designed and Printed by the Cannon Falls Beacon 800.263.3991

Call Today For Your Auction!
Bird Island, MN (320) 365-4120
Broker: Henslin Real Estate and Land, LLC • Lic. #40452768