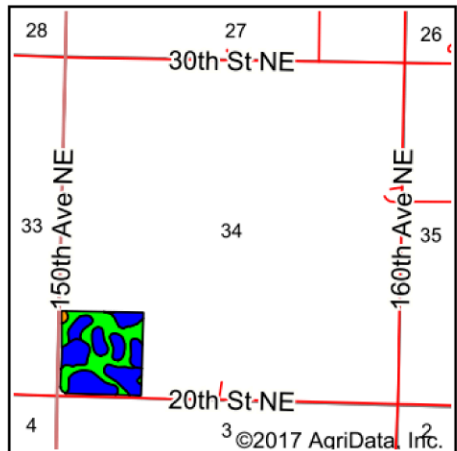
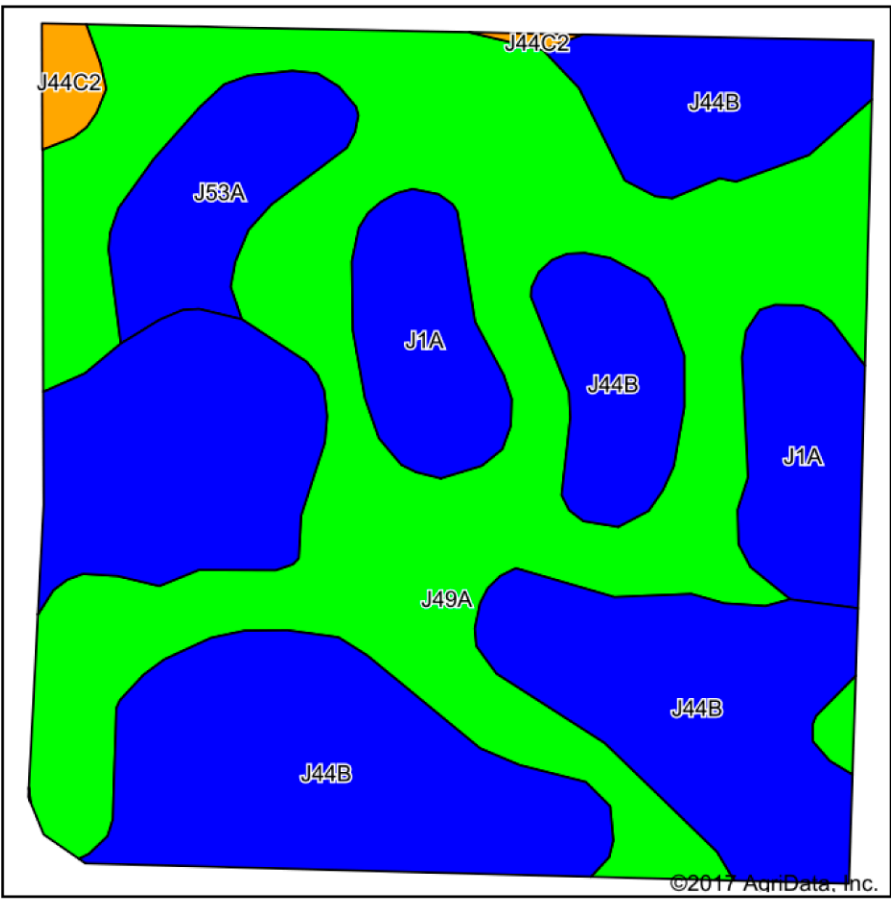


Soils Map



State: **Minnesota**
 County: **Swift**
 Location: **34-122N-37W**
 Township: **Kerkhoven**
 Acres: **37.2**
 Date: **9/14/2017**



Maps Provided By:

 © AgriData, Inc. 2017 www.AgriDataInc.com



Soils data provided by USDA and NRCS.

©2017 AgriData, Inc.

Area Symbol: MN151, Soil Area Version: 14

Code	Soil Description	Acres	Percent of field	PI Legend	Non-Irr Class *c	Productivity Index	Bromegrass alfalfa hay	Cor n	Oats	Soybeans	Spring wheat
J44B	Esmond-Heimdal-Sisseton complex, 2 to 6 percent slopes	15.75	42.3%		IIIe	84					
J49A	Lakepark-Parnell, occasionally ponded, complex, 0 to 2 percent slopes	15.61	42.0%		IIw	92					
J1A	Parnell silty clay loam, occasionally ponded, 0 to 1 percent slopes	3.54	9.5%		IIIw	86					
J53A	Ortonville loam, 1 to 3 percent slopes	1.91	5.1%		IIIs	86	4.2	149	79	47	55
J44C2	Esmond-Heimdal complex, 6 to 12 percent slopes, eroded	0.39	1.0%		IVe	75	3.7	131	68	41	46
Weighted Average						87.6	0.3	9	4.8	2.8	3.3

*c: Using Capabilities Class Dominant Condition Aggregation Method

Soils data provided by USDA and NRCS.