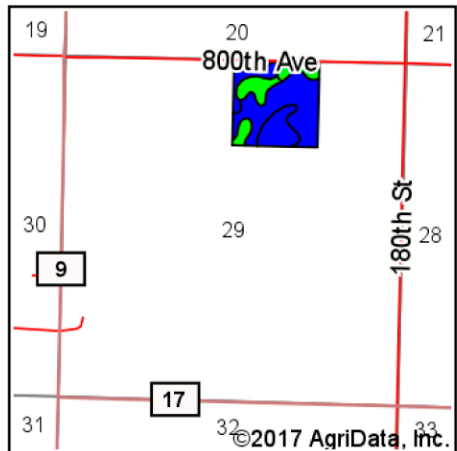
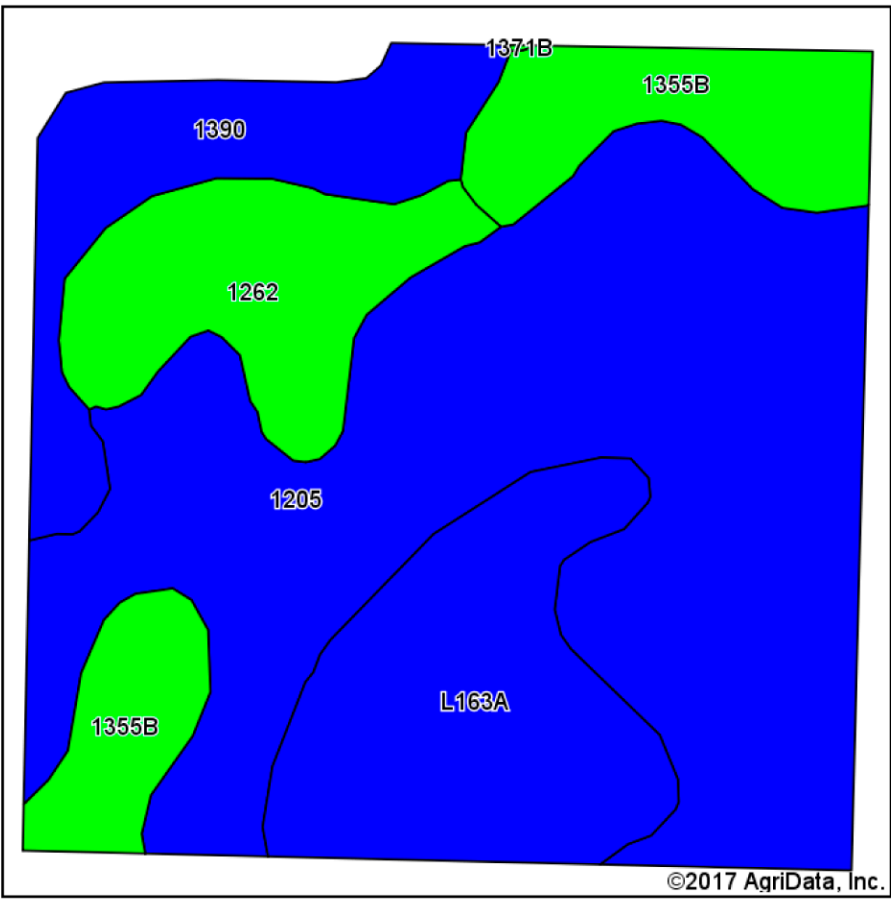


# Soils Map



State: **Minnesota**  
 County: **Renville**  
 Location: **29-115N-37W**  
 Township: **Sacred Heart**  
 Acres: **38.86**  
 Date: **4/6/2017**



Maps Provided By:  
  
 © AgriData, Inc. 2017 [www.AgriDataInc.com](http://www.AgriDataInc.com)



Area Symbol: MN129, Soil Area Version: 13

Code	Soil Description	Acres	Percent of field	PI Legend	Non-Irr Class *c	Productivity Index	Bromegrass alfalfa	Bromegrass alfalfa hay	Cor n	Oats	Reed canarygrass	Soybeans	Spring wheat
1205	Leen-Okoboji, depressional, complex, 0 to 2 percent slopes	19.73	50.8%		Ilw	89	4.9	3.8	162	83	5.5	49	50
L163A	Okoboji silty clay loam, 0 to 1 percent slopes	6.34	16.3%		Illw	86							
1355B	Amiret-Swanlake loams, 2 to 6 percent slopes	4.72	12.1%		Ile	92							
1390	Leen silty clay loam, 0 to 2 percent slopes	4.06	10.4%		Ilw	90	5.2	4	165	85		50	51
1262	Seaforth silt loam, 1 to 3 percent slopes	4.01	10.3%		Ils	95							
<b>Weighted Average</b>						<b>89.6</b>	<b>3</b>	<b>2.3</b>	<b>99.5</b>	<b>51</b>	<b>2.8</b>	<b>30.1</b>	<b>30.7</b>

\*c: Using Capabilities Class Dominant Condition Aggregation Method

Soils data provided by USDA and NRCS.