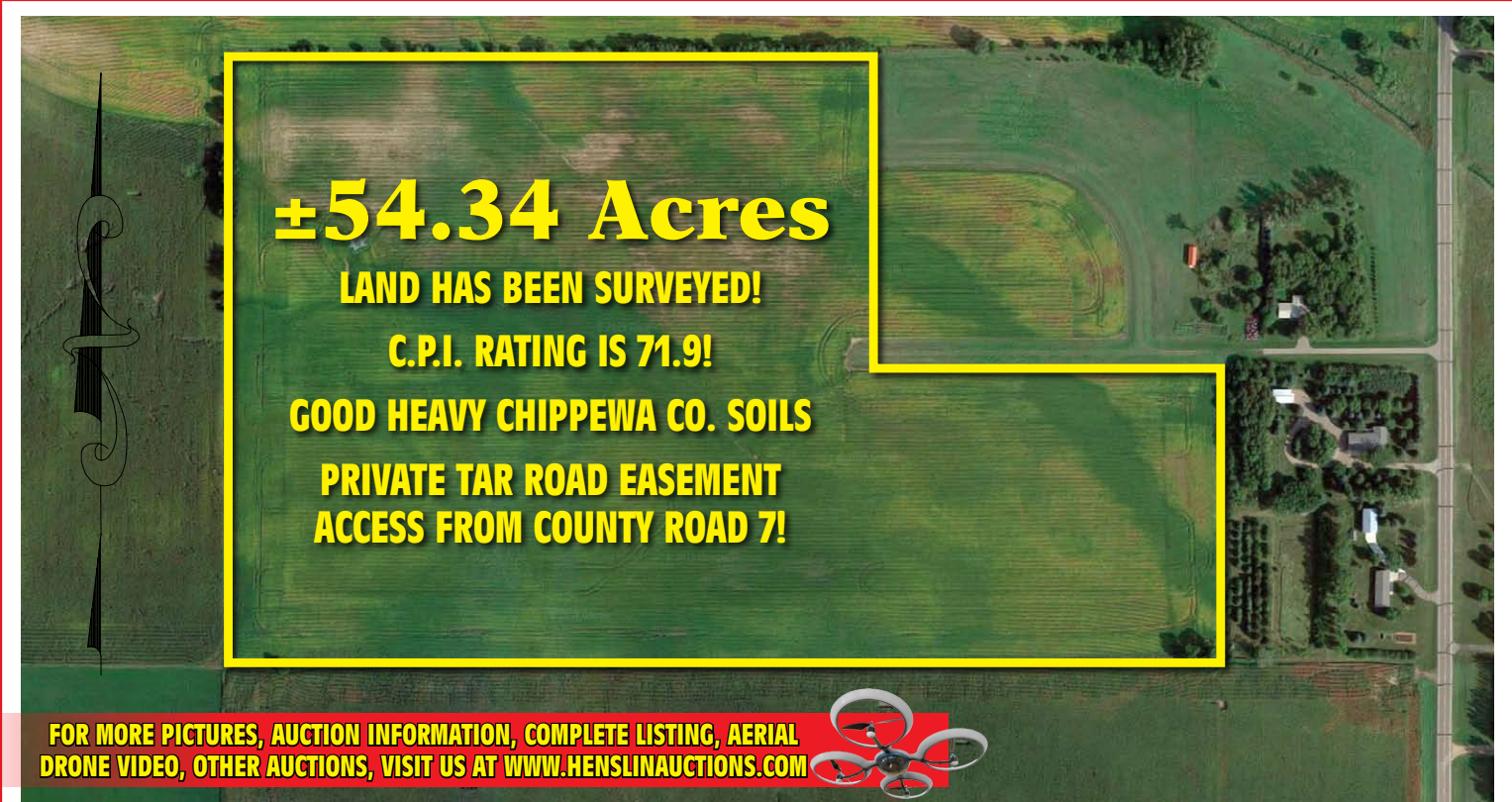


CHIPPEWA COUNTY FARM LAND

AUCTION

MONTEVIDEO, MN • THURSDAY, SEPTEMBER 12, 2019 • 10:30 A.M.



±54 Acres of Prime Chippewa County Farmland Located In Section 10, Sparta Twp, T-117-N, R-40-W

LAND LOCATION:

Two miles east on Highway 7, 3/4 mile north on 30th Avenue S.W. - west side of Road. *(Watch for Henslin Auction signs!)*

AUCTION TO BE HELD AT:

Table Two Twelve Chop House
Golf Course Club House
4490 US Highway 212 • Montevideo, MN 56265
(West Edge of Montevideo)

Duaine & Dale Kurtzbein



Allen Henslin 65-57
Cell: 320-979-1808
LaDon Henslin
Brad Dallmann
Frank Roering
Real Estate Agent
Laura Posl
Cell: 320-262-4893

FOLLOW US



CALL HENSLIN AUCTIONS FOR LAND BOOKLET TODAY! (320) 365-4120

Auction Terms: To attend the auction and receive a bidding number, buyer's must present auction company with certified funds of \$10,000. This money will be required as non-refundable down payment for this parcel when signing the purchase agreement immediately following the auction. Buyers premium will apply. Possession of land will will be granted after the 2019 crop has been removed. Closing is scheduled for Thursday, October 31. For more information, maps, aerial drone videos and pictures, visit us at www.henslinauctions.com

www.henslinauctions.com

Designed and Printed by the Cannon Falls Beacon 800.263.3991

Bird Island, MN (320) 365-4120
Call Today For Your Auction!
NAA Auctioneer
MNA Auctioneer
Minnesota Auctioneer
Broker: Henslin Real Estate and Land, LLC • Lic. #40452768