

# TRACTORS, JD 9750 STS COMBINE, GRAIN TRUCKS, FARM & TILLAGE EQUIPMENT & MUCH MORE

**CLEAN LATE MODEL FARM EQUIPMENT RETIREMENT**

# AUCTION

**WABASSO, MN • THURSDAY, SEPTEMBER 5, 2019 • 10:00 A.M.**

Directions from Redwood Falls, MN: 11 Miles South on U.S. Highway 71, 1.2 Miles West on 220th St. North side of Road; Sanborn Corner: Nine Miles North on U.S. Highway 71, 1.2 Miles West on 220th St. North side of Road. Watch for Henslin Auction Signs!

**AUCTION NOTES:** After many successful years of farming, Dana and Renee have rented out their land and will discontinue their farming operation. We will begin with approximately 45 minutes of misc items then on to major equipment. Most items have been shedded and are well maintained. Don't miss this auction. See you at the auction!

## TRACTORS & TECHNOLOGY



2010 Case IH 335 Magnum MFWD Tractor, 18 Spd, 4 Rev, Power Shift, L.H Reverser, Instructional Seat, 4 Hyds, 1209 Hrs, Large 1000 PTO, Right Side Steps, 3 Pt, Quick Hitch, 480/80R50 Hub Duals, Front Fenders, Total Weight Package, 10 Front Suitcase Weights, Auto Steer Ready, 2019 Batteries, Sn#29R201423, Case IH Up Time Has Been Done Right Hand Steps for CIH 335 Tractor, Sold Separately IH 1066 Turbo 2WD Tractor, Cab, 3pt, 18.4-38 Tires, 2 Hyds, 540/1000 PTO, Rock Box, 7910 Hrs, Showing, Bought New, Sn#2610172UG34989 Star Fire ITC Receiver Globe, Sn# 501327 Raven GPS Display



1994 Ford 8670 FWA, 10/4 R Powershift, 4 Hyds, 540/1000 PTO, 3 Pt, 18.4R42 Hub Duals, 16.9-26 Fronts, Fenders, 12 Suitcase Weights, 4693 Hrs Showing, 2018 Batteries, SN#D400497X867-0XMC910U3L23BX Farmall 656 2WD Tractor, Hydrostatic Drive, 8442 Hrs Showing, Gas, WF, 15.5-38 Tires, Fenders, 3pt, PTO, w/ Int 2000 Loader, 7' Snow Bucket, Manure Bucket, Sn#34600 Farmall M Gas, NF, Single Hyd, 540/1000 PTO, 15.5-38 Tires, New 6.00-16 Tires, 12 Volt, Power Steering, Sn#260838 John Deere 2630 Display, SF1, Sn#PCGU266154766 (Kibble, Wabasso)



Demco 650 Bu Grain Cart, Shur Lock Cable Lok Roll Tarp, Scale, Software & Memory Stick, Swivel Spout, 14" Front Corner Discharge Auger, 24.5-32 Tires, Bought New



1994 White 12R30 Model 6100 Planter, Markers, V Style Yetter Row Cleaners, Spoke/Smooth Press Wheels, Monitor, Bought New, w/Maintenance Updates, Sn#608001



1987 International F9370 Tri-Axle Twin Screw Grain Truck, 10 Spd, Air Up/Down, 21' Steel Box & Hoist, Roll Tarp, 870,020 Miles, 855 Cummins Dsl Engine, Poly Floor In Box

## COMBINE & HEADS



2003 John Deere 9750 STS Combine 4wd, 3533 Eng/2380 Sep, Contour Master, Y&M Monitor, Single Point Hookups, Power Tail Board, Instructional Seat, Green Star Ready, J&M Grain Tank Extension, Upgrades On Rotor, 20.8R42 Duals, 18.4-26s, Sn#H09750s701146 John Deere 893 8R30 Corn Head, Poly Snouts, Lights, Hyd Deck Plates, Stubble Lights, Single Point Hookup, Direct Drive Chopper Ready, Sn#H00893X705 John Deere 930F Flex Head, Fore/Aft, Stubble Lights, Full Finger Auger, Single Point Hookups, Sn# H00930f691189 Horst 4 Wheel Header Trailer, Adj Reach On Tongue

## LAWN, GARDEN & MISCELLANEOUS

Polaris 500 ATV w/Boomless Sprayer, 209 Miles ATV Yard Leveler, PT AC 917 Hydro Lawn & Garden Tractor, Kohler Engine, 922 Hrs Showing, w/ Rear Tiller & Deck Snapper Z2003k Zero Turn Mower, 60" Deck, 994 Hrs, 20 Hp Kohler Engine, Newer Cherry Picker, Eng Stand, Parts Washer Pt Lawn & Fert Sprayers Aeration Fans 3 Poly Auger Boots 25 Gallon Flimco Yard Sprayer, Boom, Wand, 12v Pump 4 Seat Bean Rider, 15 Gal Tank 9' & 12' Bin Sweeps Misc IH Wheel Weights, Some Full/Some 1/2 Weights Various 15", 16" & 17" Tires (1) New 12.5L-15SL on 6 Bolt Rim, 10 Ply (2) 12.5L-15's Good Year, 8 Ply on 6 Bolt Rim (1) 12.5-15 Firestone, 8 Ply on 6 Bolt Rim (2) 9-24 Tires on JD 8 Bolt Rims (1) 9.5L-15 6 Ply Tire on IH Rims



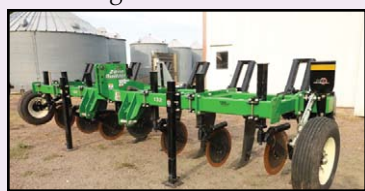
John Deere 2720 12' 6" 5 Shank Disc Ripper, Rear Disc Levelers, Rolling Baskets, Bought New, Sn#1A82720XLEO755392 Parker 500 Gal Field Sprayer, Walking Tandems, 60' Booms, PTO Pump Raven Controller for Spray Sold Separate Case IH 4800 32' Field Cultivator, 3 Bar Harrow, T.E.SLAA Rolling Baskets, Walking Tandems On Main Frame & Wings, Hyd Self Leveling Hitch



Harvest International H1062 10" X 62' Swing Hopper Auger Low Profile, Hyd Lift, Bought New, Used On Approx 100,000 Bu, Sn#05429 Hutchinson 8" X 60' Auger, PTO, Hyd Lift, Feterl 8" X 41' Auger, PTO, Sn# 841RKL002 Feterl/Farmking 834 8" X 34' Auger, PTO, Sn#2200954411 Hutchinson 6" X 30' Auger, Hyd Drive (2) Hutchinson 8" X 50' Augers, PTO Feterl Grain Screener w/Electric Motor Mckee 7' Double Auger Model 720 Snowblower 8' Zeeco Double Auger Snowblower 12' John Deere Grain Drill On Rubber 2 Section Wheel Yard Drag, Spring Tooth Sections Spike Tooth Drag 2 Wheel Rock Wagon Dump Trailer Wood Corn Picker, Ear Saver For Mounted IH Picker Baler Needles Wilrich 20' Stalk Chopper, 4 Rear Wheels, Light Package, Bought New, Sn#458812 400 & 200 Gal 3pt Sprayers 7' IH Sickle Mower Peerless Feed-O-Star Stationary Feed Grinder (3) 300 Bu Feed Bins on Stands, No Btms Bulk Feed Bin



1987 Ford L9000 Twin Screw Grain Truck, 10 Spd Trans, 855 Cummins Dsl Engine, 17.5' Steel Box & Hoist, 6' Sides, 3 Pc End Gate, 10.00-22.5, Roll Tarp, Air Brakes, 742,349 Miles Showing, Slip Coat In Box 1974 Chev C-65 Tandem Axle Grain Truck, Lift Tag, 19' Crysteel Box & Hoist, Fiberglass Bottom, 3 Pc End Gate, Tarp, 360 Gas Engine, 5&2 Spd Trans, 44,963 Miles



UM Zone Builder 132, 7 Shank Sub Soiler, Sn#A58400417, Brand New Kewanee 1020 20' Flat Fold Tandem Disc, Duals Wheels On Main Frame Phoenix Excell 15' Harrow 15' 3 Section Pull Type Packer (2) 500 Gal Fuel Barrels With Pumps 100 Gal Dsl & Gas Pickup Caddy Tanks on Wheels 1000 Gal Poly Tank Wil-Rich 17.5' Chisel Plow, 18 Shank, Walking Tandem, Side Gauge Wheels Win Power Alternator On 2 Wheel Cart, PTO, Model 25/15pt2, 120/240 Volt

## CAMPER



26' Sandpiper By Forest River Pull Type Tandem Axle Camper, Awning, Front Bathroom, Sofa, Dinette, Sink, Stove/Oven, Refrigerator, Freezer, Microwave, Cabinet, Bunk Beds, Shower, Sink, Spare Tire & Stabilizing Hitch, Front & Rear Leveling Jacks,

**SEE YOU AT THE AUCTION!**

# Dana & Renee Lindeman

507-430-5349 • 31631 220th Street • Wabasso, MN 56293



Bird Island, MN (320) 365-4120

Call Today For Your Auction!



**AUCTIONEERS:**  
LaDon Henslin  
Allen Henslin 65-57  
Frank Roering  
Brad Dallmann  
Mark Molenaar  
Doug & Zak Kerkhoff

FOLLOW US



LIVE ONLINE BIDDING POWERED BY:  
HENSLIN AUCTIONS, INC. & PROXIBID

FOR MORE PICTURES, AUCTION INFORMATION, COMPLETE LISTING, AND OTHER AUCTIONS VISIT US AT:

[www.henslinauctions.com](http://www.henslinauctions.com)

**Auction Terms:** Cash, Good bankable check, Credit cards. All items sold as-is, where-is with no warranties or guarantees of any kind. All items must be paid for at the conclusion of auction prior to removal from location. MN sales tax law will apply. Any verbal announcement made by auctioneer will take precedence over any and all printed material. Auctioneers and their staff are not responsible for accidents. Out of area buyers please bring letter of credit. Lunch on Grounds.

Designed and Printed by the Cannon Falls Beacon 800.263.3991