

**Multi-Parcel  
Real Estate,  
Construction  
& Industrial  
Equipment**

# Auction

**TUESDAY, APRIL 17, 2018 • 9:00 A.M.**

**40 & 38 Ton Cranes, Fontaine Detach Equipment Trailer, Lull & Sky Trac Forklifts, Service Trucks, Skid Loader Attachments, Welders, Air Compressors, Shop Items & Parts**

## Absolute Multi-Parcel Real Estate Auction

Main Street Office Building, Nice Heated Shop and .57 Acre Bare Lot.  
**Both Parcels Sell Absolute, No Minimums, No Reserves**



### PARCEL 1:

Double Shop: West Shop: 33' x 58', with (3) 10' x 9' Overhead Doors, Service Door, Block Building, 12' Ceiling, 100-Amp Breakers, (2) Restrooms  
East Shop, 27' x 55' with 13' x 17' Overhead Door, Service Door, Wood & Vinyl Siding, 15' Ceiling, Floor Drain, 150-Amp Breakers, Natural Gas in Both Shops  
.57 Acre Bare Lot Included



### PARCEL 2:

Old Bank Building, App. 23' x 38' Brick Building  
Office-1 App. 8' x 11'  
Office-2 App. 23' x 29'  
100-Amp Breakers  
Walk-In Vault With Combo Full Basement  
Central Air, Natural Gas Heat  
City Water & City Sewer  
Main Street Access

### OPEN HOUSE DATES:

**Friday April 6, Noon to 1:00 p.m., Monday April 9, Noon to 1:00 p.m.**

**Terms:** \$2,500 down Certified Funds or Cash per parcel day of auction. Remainder due in approximately 35 - 40 Days. Buyer's premium will apply to real estate only. For more information call 320-365-4120.

## TOOLS, PARTS, OFFICE EQUIPMENT & MISCELLANEOUS

Dvorak Hyd Iron Worker "Little Scotchman" Model 683, Single Phase, on Casters, S/N# 161970  
American IMC 80 Gallon Upright Air Compressor, Single Stage, 5 HP, Single Phase  
Portable Air Compressor With 9 Hp Gas Engine  
Case 7' Semi-Mount Sickle Mower  
(2) 250 Gallon Poly Tote w/ Cage  
(2) 200 Gallon Poly Shuttle, No Cage  
Milwaukee Steel Hawg Mag Drill  
Milwaukee 8" Industrial Circular Saw with Case  
Milwaukee Hammer Drill With Case  
10 Ton Service Floor Jack  
Larin 3 Ton Floor Jack  
NAPA Porta Power Dewalt Chop Saw  
C.P. 1" Air Impact  
HD Fleet Battery Charger, 300 Amp Start  
All Weather Battery Charger  
Solar 12 Volt Battery Charger  
Craftsman Magna Tap & Die Sets  
3/4" Socket Set  
Snap Ring Plier Set  
Gear Pullers In Case  
Vise & C Clamps  
Craftsman 17" 1 1/2 HP Floor Model Drill Press

Large Cleereman Floor Model Drill Press, 3 Ph. Sold With Converter  
Tradesman 14" Floor Model Drill Press, 16 Spd, Vise  
Large A Frame Hoist on Casters  
Hyd Cherry Picker  
Steel Work Benches  
Bench/Cabinet on Casters With Tradesman 8" Bench Grinder  
GP Pressure Washer on Cart, Parts Washer  
Etterman Enterprises 24 Drawer Hardware Cabinet on Casters  
Wallace Lift Truck Boom Crane, Fork Slotted  
100 Gallon Pickup Fuel Tank With Hand Pump  
L Shape Pickup Fuel Tanks  
100 Gallon Pickup Fuel Tanks  
(2) Hilti R4X12 Air Nailers With Case  
Hilti MD 2500 Caulking Gun  
Metal Bolt Bin With Bolts  
24' Fiberglass Ext Ladder  
6' Fiberglass Step Ladder  
HD Jack Stands  
Hand Oil Pumps  
Come-A-Longs  
Chain Hoists  
Button Punch, Bottle Jacks  
Drill Bits  
Summer Floor Winch  
Creepers, Hyd Hoses  
HD Homemade Saw Horses

Strapping, Lift Straps  
Manlift Cables  
Lots of Cable  
Large Clevises  
2 Wheel Cart  
(4) 14.00 X 20, 14 Ply Goodyear Tires  
(2) 18 X 22.5, 16 Ply General Tires  
6' Pull Type Yard Drag  
4 Wheel Running Gear  
Dry Welding Rod Cabinet  
Truck Mirrors, Anchor Bolts  
Starters / Generators  
Misc Oil, Air, Fuel Filters  
Misc Ignition Parts, Plugs, Points  
Rubber Hoses  
Electric Wire  
(2) Large I-Beams  
Rack of Steel  
New Flat & Angle Iron  
Gang Boxes  
Lots Of Hand & Power Tools  
HP Design 500 Blue Print Printer  
Brother Intellifax 2920, Fax  
Microwave Oven  
Small Refrigerator  
Office Supplies, Chairs, Desk  
File Cabinets, Book Shelves  
Dodge Blueprint Scanner  
**Much, Much, More**

**AUCTION NOTES:** Mid-Central Steel has been operating for the last thirty years. Gary has decided to retire and discontinue his construction business. We will begin with Real Estate, concluding with Equipment and Inventory. Henslin Auctioneers are honored that Gary has once again selected us to do a large auction. Don't miss this auction. See you there. *the Henslin Auction team*

## CRANES, MANLIFTS, TELL-A-HANDLERS & WELDERS



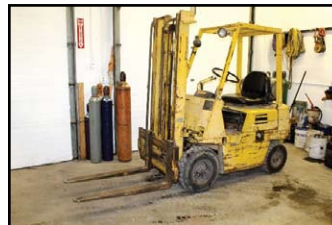
P & H Omega 40 Ton Crane, 4 X 4, Dsl, 26.5-25's  
Grove 38-Ton Truck Crane, Recent Reman DSL, S/N# 00020  
Lull Highlander 1044, 4 X 4, Tell-A-Handler, Dsl, Forks, S/N #E6-285  
Lull Highlander 844, 4 X 4, Tell-A-Handler, Dsl, 42" Forks, 13.00-24's, S/N# JD01976N



Skytrak 10054, 4 X 4, Tell-A-Handler, Dsl, 48" Forks, 8,409 Hours Showing, 17.5-25's  
Skytrak 9038, 4 X 4, Tell-A-Handler, Rebuilt JD Dsl, Forks, S/N# D0015  
Skytrak 7038, 4 X 4, Tell-A-Handler, 48" Forks, 4 Cyl. Ford Dsl, 5,362 Hours Showing



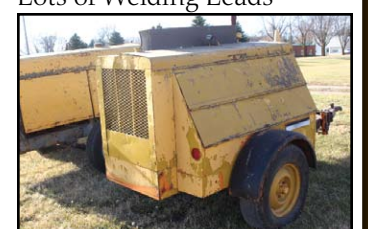
1999 JLG 40H Telescoping Manlift, 4 X 4, 4 Wheel Steer, Duel Fuel LP & Gas, S/N# 078763-0300038726  
Snorklift Telescoping Manlift, 4 X 4, Duel Fuel Dsl & LP Gas, 30" X 60" Alum Work Platform, 12-16.5's, S/N# 877751187  
Snorklift Telescoping Manlift, TB60, 60" 2 WD, Wisconsin Gas, Rear Steer, S/N# 851570685  
Simon MP60 4 X 4, Rear Steer, Manlift, 2,246 Hours Showing, 4 Cyl Gas  
Lincoln Wire Welder  
068 Inter Shield Wire, NIB  
Nelson Stud Welder, TR450A  
Lots of Welding Leads



Komatsu LP Single Stage Forklift, 3,000 LBS  
250 AC/DC Arc Welder, Single Phase  
Esab 250 UM Arc Welder  
Lincoln Shield Arc SA-250 Welder / Generator on Cart  
Lincoln SP 125 Plus Wire Welder  
(2) Torch Carts, Hoses, Regulators  
Miller Side Kick Wire Welder on Cart  
Miller Du-Op Dsl Welder, S/N# 96691



(2) Miller Trailblazer 3000 Dsl Welder/Generators, 3,961 & 4,185 Hours Showing  
Miller Millermatic 250 Wire Welder on Cart  
(4) Miller Big Blue 251D Welder/Generators, Dsl, on Trailers  
Miller Trailblazer 300 D Portable Welder/Generator, Kubota Dsl, S/N# D-722, on Cart  
Miller Big Hog Welder/Generator, 4 Cyl. Gas, 2,125 Hours Showing



Homemade 2 Wheel Welder Trailers  
Lots of Welding Rods & Helmets  
.035 Welding Wire, NIB  
Forklift Lifting Boom  
(4) Crane Cable Hooks  
Homemade 7' Fork Exts.

## TRAILERS & PICKUPS

1999 Fontaine Detach Tri-Axle Trailer, 102" X 36', 23 Bed, Model TB50NGP, Spring Ride, 255/70R22.5's  
2000 Ford E350 1 Ton, Auto, Dsl, Dually, Reg. Cab, with 9' Contractors Box, 274,230 Miles  
2000 Ford E350 1 Ton, Auto, Dsl, Dually, Reg. Cab with 9' Contractors Box,  
2000 Ford E350 1 Ton, Auto, Dsl, Dually, Reg. Cab, Contractors Box, 240,340 Miles, For Parts or Repair  
2000 Ford E350 1 Ton, Dually, Reg. Cab, Contractors Box, Auto, Dsl, 319,650 Miles, For Parts or Repair

1999 GMC 3/4 Ton Pickup, 2WD, Regular Cab, 5.7 Liter, Auto, 257,371 Miles, For Parts Or Repair  
Tri-Axle Crane Tow Behind Trailer, Pintle Hitch, Air Brakes, 11R22.5S  
Fruehauf Enclosed Semi Trailer, Needs Repair

Homemade 47" X 120" Rail Trailer, Manual Tilt, SNT  
Whitley 8' X 21' Job Trailer, Needs Tires, SNT  
Home-Made App. 8' X 16' Job Trailer  
Reading 9' Steel Contractor Box

## NEW SKIDLOADER ATTACHMENTS

(2) 6' QT Brush Mowers  
(2) 72" QT Double Brush Grapples  
84" QT Rock Grapple  
72", 78", 80" QT Material Buckets  
(2) QT Bale Spears

78" & 80" QT Material Buckets With Teeth  
QT Receiver Hitch Plate  
QT 10" & 12" Posthole Augers  
QT Tree/Post Puller  
Many More Items

# Mid-Central Steel

**102 MAIN ST. S.  
BLOMKEST, MN  
320-995-6162**



**Bird Island, MN (320) 365-4120**

Allen Henslin 65-57  
Brad Dallmann  
Cell: 320-905-6226  
Frank Roering  
LaDon Henslin  
Wayne Pike  
Laura Posl • R.E. Agent  
Cell: 320-262-4893

FOLLOW US



**NO DRIVE ON INSPECTIONS PLEASE!**

LIVE ONLINE BIDDING POWERED BY:  
**HENSLIN AUCTIONS, INC. & PROXIBID**

FOR MORE PICTURES, AUCTION INFORMATION, COMPLETE LISTING, AND OTHER AUCTIONS VISIT US AT:

**www.henslinauctions.com**

**Auction Terms:** Cash, Good bankable check, Credit cards. All items sold as-is, where-is with no warranties or guarantees of any kind. All items must be paid for at the conclusion of auction prior to removal from location. Any verbal announcement made by auctioneer will take precedence over any and all printed material. Auctioneers and their staff are not responsible for accidents. Out of area buyers please bring letter of credit. Lunch on Grounds.

Designed and Printed by the Cannon Falls Beacon 800.263.3991

Call Today For Your Auction!



Broker: Henslin Real Estate and Land, LLC • Lic. #40452768