

PRIME MULTI-PARCEL KANDIYOHI COUNTY FARM LAND

AUCTION

WILLMAR, MN • WEDNESDAY, AUGUST 30, 2017 • 11:00 A.M.

**±224.66 ACRES OF PRIME KANDIYOHI FARMLAND LOCATED
IN WILLMAR TOWNSHIP, SECTION 33, KANDIYOHI COUNTY**

Parcel 1: ±148.53 Acres of Prime Farm Land Located in SE¼ of Section 33, Willmar Twp, Kandiyohi Co. C.P.I. Rating = 89.5

Parcel 2: ±76.13 Acres of Prime Farm Land Located in W½ of The NE¼ of Section 33, Willmar Twp, Kandiyohi Co. C.P.I. Rating = 89.5

AUCTION LOCATION:

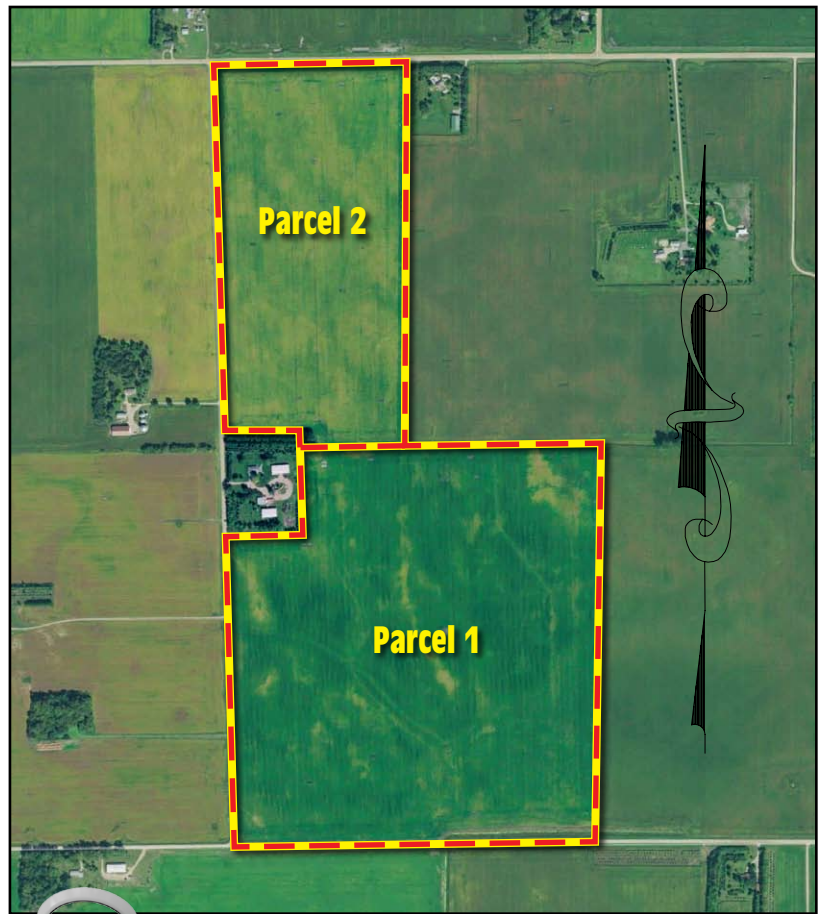
The Oaks at Eagle Creek,
1000 26th Avenue NE,
Willmar, MN 56201

Well Tiled!

Land Has Been Surveyed!!

LAND LOCATION:

Willmar, MN: South on US Highway 71 one mile (south side of Mills), 1½ miles west on 45th Ave S.W., south on 22nd St. S.W. (East Side of Road)
Watch For Henslin Auction Signs!



FOR MORE LAND INFORMATION, AERIAL PHOTOS & VIDEO, VISIT US AT WWW.HENSLINAUCTIONS.COM

DONAVON & KATHLEEN MONSON



Bird Island, MN (320) 365-4120

Call Today For Your Auction!



Allen Henslin 65-57
Cell: 320-979-1808

LaDon Henslin
Brad Dallmann
Frank Roering

Real Estate Agent
Laura Posl

Broker: Henslin Real Estate and Land, LLC • Lic. #40452768

FOLLOW US



CALL HENSLIN AUCTIONS FOR LAND BOOKLET TODAY! (320) 365-4120

Auction Terms: To attend auction and receive a bidding number, buyers must present auction company with \$30,000. This money will be required as non-refundable down payment for each parcel at the signing of the purchase agreements immediately following the auction. Possession will be granted after the 2017 crop has been removed. Buyer's premium will apply. Mr. Jon Saunders will be the seller's closing attorney. Closing to be scheduled for Monday, January 22, 2018 for both parcels. For more information, aerial drone videos and pictures, visit us at www.HenslinAuctions.com or call (320) 365-4120.

www.henslinauctions.com

Designed and Printed by the Cannon Falls Beacon 800.263.3991