

PRIME MULTI-PARCEL BIG STONE COUNTY FARM LAND

AUCTION

APPLETON/CORRELL, MN • FRIDAY, MARCH 29, 2019 • 1:00 P.M.

±309 ACRES OF PRIME BIG STONE COUNTY FARMLAND LOCATED IN EAST HALF OF SECTION 24, AKRON TWP NORTH, T-121-N, R-44-W

Good Heavy Big Stone County Soils

Parcel-1: ±139 Acres, C.P.I. Rating: 88.7

Parcel-2: ±170.65 Acres, C.P.I. Rating: 87.5

Drainage Tile Located In Both Parcels!!

Both Parcels Have Been Surveyed!

LAND LOCATION:

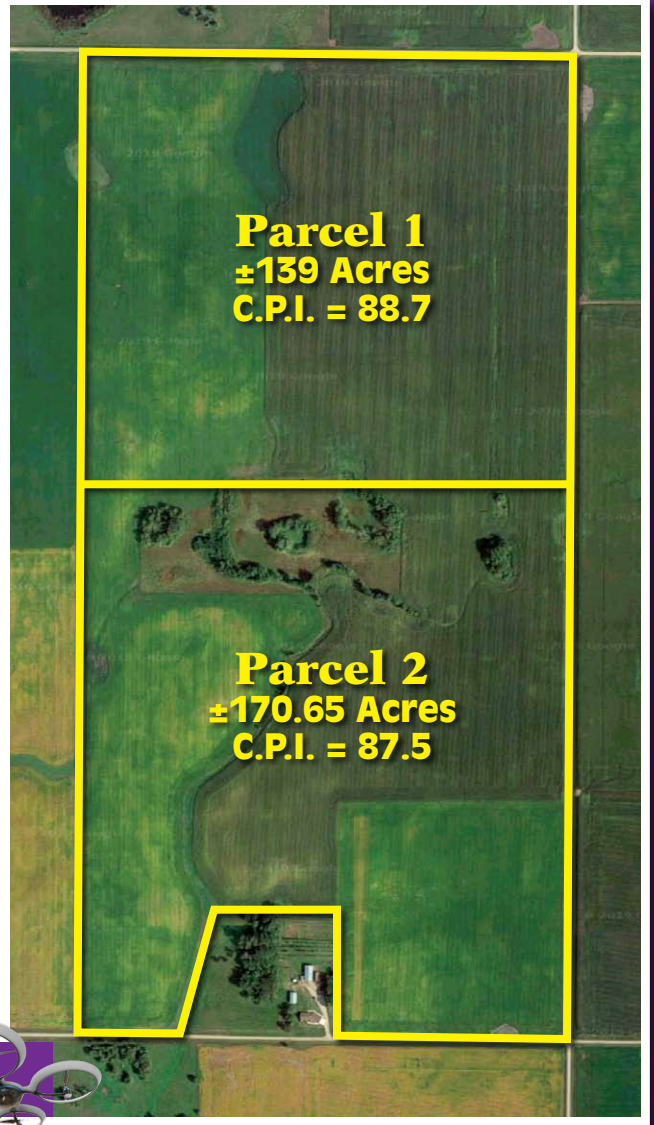
Correll, MN: Three miles north on County Road 25, 1¾ miles east on 440th Street. North side of road.
(Watch for Henslin Auction Signs!)

AUCTION HELD AT:

Shooter's Bar and Grill

530 West Christenson Avenue • Appleton, MN 56208

This land has been in the Munsterman Family for nearly 70 years. Mike has farmed this land for the last 28 years. This is a great opportunity to own farm land with very good soils and drainage. Call 320-365-4120 for more detailed information. See you at the Auction. *Henslin Auctioneers*



Parcel 1
±139 Acres
C.P.I. = 88.7

Parcel 2
±170.65 Acres
C.P.I. = 87.5

FOR MORE PICTURES, AUCTION INFORMATION, COMPLETE LISTING, AERIAL DRONE VIDEO, OTHER AUCTIONS, VISIT US AT WWW.HENSLINAUCTIONS.COM



Mike Munsterman



Bird Island, MN (320) 365-4120

Call Today For Your Auction!



Broker: Henslin Real Estate and Land, LLC • Lic. #40452768

Allen Henslin 65-57
Cell: 320-979-1808

LaDon Henslin
Brad Dallmann
Frank Roering
Real Estate Agent
Laura Posl

Cell: 320-262-4893

FOLLOW US



CALL HENSLIN AUCTIONS FOR LAND BOOKLET TODAY! (320) 365-4120

Auction Terms: To attend auction and receive a bidding number, buyer's must present auction company with certified funds of \$25,000. This money will be required as a non-refundable down payment for each parcel when signing the purchase agreement(s) immediately following the auction. Possession of the land will be granted after closing. Buyer's Premium will apply. For more information, aerial drone videos and pictures, visit us at www.henslinauctions.com

www.henslinauctions.com

Designed and Printed by the Cannon Falls Beacon 800.263.3991