

# CLEAN, WELL-MAINTAINED FARM EQUIPMENT RETIREMENT

# AUCTION

**\* NO DRIVE-ON INSPECTIONS AT THIS TIME \***

**PENNOCK/WILLMAR, MN • TUESDAY, MAY 21, 2019 • 10AM**

**JOHN DEERE 4840 - JOHN DEERE 4440 - JOHN DEERE 7720 COMBINE WITH HEADS - JOHN DEERE  
PLANTER - FARM EQUIPMENT - COLLECTIBLE FARM EQUIP. & VEHICLES - GRAVITY BOXES & FARM MISC.**

## TRACTORS, COMBINE & HEADS

**JD 4840 2WD Tractor**, 8 Speed Power Shift, 3 HYD, 480/80R42 Hub Duals, 3PT, Quick Hitch, 9,565 Hours Showing, S/N#4840009049R



**JD 4440 2WD Tractor**, Quad, 2 HYD, 18.4-38's, 3 PT, Quick Hitch, 540/1000 PTO, Rock Box, 8,169 Hours Showing, S/N#H060496RW (well maintained; one owner)

**JD B Tractor**

**Case DC Tractor**

**Case 1030 Comfort King 2WD Tractor**, WF, Diesel, Cab, 2 HYD, 18.4-38's, Rear Wheel Weights, S/N#8828573

**JD 720 Diesel**, Pony Start, NF, Power Steering, 15.5-38's



**JD 7720 Turbo Hydro Combine**, 18.4-38 Straddle Duals, 14.9-24 Rears, 4,545 Hours Showing, S/N#H07720X601245

**JD 925 Flex Head**, Fore & Aft, Stubble Lights, S/N#H00925F651816

**JD 843 8R30" Low Tin Corn Head**

**Homemade 4-Wheel Head Trailer**

**18.4-R38 Band Duals Case Front Weights Clam Shell Fenders**

**1989 Ford F-150 4 x 4 Regular Cab Pickup**, XLT Lariat, 5.0 Liter, Auto, Lock Outs

## TILLAGE & FARM EQUIPMENT AND MISC.

**JD 980 26' Field Cult**, Walking Tandems on Main Frame & Wings, 3 Bar Harrow, S/N#N00980K020631



**Killbros 1065 Gravity Box**, Surge Brakes, Lights, 445/65R22.5 Super Singles, Like New



**(2) Killbros 385 Gravity Boxes**, Killbros 1396 Gears, 385/65R22.5 Super Singles, Lights

**(2) MN 250 Gravity Boxes**, MN Jumbo 10-Ton Gears

**(2) 125 Bushel Gravity Boxes**, HD Gear

**Husky 125 Bushel Gravity Box**, Husky HD Gear

**J&M Hyd Drill Fill Auger Westfield MK 100-71 Swing Hopper Auger**, Low Pro Hopper, Hyd Lift, S/N#212273

**Westfield 8"-61' Auger**, PTO

**JD 2800 5 Bottom Vari-Width Plow**, Semi-Mount, Coulters, AR

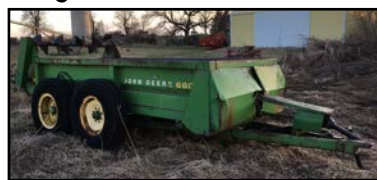
**White 549 5-18 Plow**, Semi-Mount, AR

**Dakon 11' 5-Shank Mounted Deep-Till** With Gauge Wheels

**Wilrich 12' PT Chisel Plow**

**Lindsay 10' PT Chisel Plow**

**White 252 20' Manual Fold Wings Tandem Disc**



**JD 660 Tandem Axle Manure Spreader**, Hyd Slop Gate



**JD 7000 8R30" Planter**, Dry Fert, Yetter Row Cleaners, Insecticide Boxes, Dickey John Monitor

**JD RM 8R30" Cult**, Rolling Shields

**JD 13' VanBrunt Grain Drill** With Grass, Manual Lift, Low Rubber

**6-Section Spring Tooth Drag-On Cart**

**Oliver 4-Bottom PT Plow**

**JD 2-Bottom PT Plow #623**

**NH 488 9' Haybine**

**(2) 16' Flat Racks on Gears**

**(2) JD Semi Mount Sickle Mowers**, 7' Bar

**JD 14' PT Tool Bar with Teeth**

**JD Tool Bar Shanks**

**AC 4 Bar PT Rake**, PTO

**5-Section Spike Tooth Drag** with Evener

**15' Midwest 3-Bar Harrow**

**Running Gear**

**Single Disc**

**3 Bottom Disc Plow** for parts or repair

**385/65R22.5 Super Single Tire & Rim**



**500-Gallon Fuel Barrel**, Fillrite Pump with Meter

**(2) 300 Fuel Barrels** on Steel Stands

**MN 260 Gravity Box**, Gear, Parts

**(2) 1946 - 1950 Plymouth Special Deluxe Cars**, No Engines, Parts

**1963 Plymouth Belvedere Car**, Parts

**1920's International Pickup**, for Parts

**JD Black HYD Cylinder**

**Murry Lawn Mower**

**Dump Rake**

**Steel Wheels**

**Auger Parts**

**Scrap Iron & Grove Machinery**

**Horse-Drawn Equipment**

**Various Household Items and Collectibles**

**GRAIN BINS TO BE MOVED BY  
SEPTEMBER 1ST, 2019**



**GSI Approx. 10,000 Bushel Grain Bin**, Burner Fan, Full Floor, 8" Unload Auger

**Butler Approx. 5,000 Bushel Grain Bin**, Burner Fan, Full Floor, 6" Sump Approx. 5,000 Bushel Grain Bin With Stabilizers

**FOR MORE PICTURES, ONLINE BIDDING AND OTHER AUCTION INFORMATION, VISIT US AT  
WWW.HENSLINAUCTIONS.COM**

**LIVE ONLINE BIDDING POWERED BY:  
HENSLIN AUCTIONS, INC. & PROXIBID**

**AUCTION NOTES** Ross and Dottie Peterson have sold their land so that they can discontinue their farming operation and relocate to north Georgia. We are pleased to once again be selected to conduct their auction. Please be on time. See you there! *Henslin Auctions, Inc.*

# PETERSON FAMILY, OWNERS

## AUCTION LOCATION

**PETERSON FAMILY FARM**

8500 15TH AVE SW  
PENNOCK, MN

**WATCH FOR HENSLIN AUCTION SIGNS!**

## EQUIPMENT OWNER

ROSS PETERSON - (320) 979-7987

**AUCTION TERMS:** Cash, Good Bankable Check, Credit Cards. All items sold as-is, where-is with no warranties or guarantees of any kind. All items must be paid for at the conclusion of Auction prior to removal from location. MN sales tax law will apply. Any verbal announcement made by auctioneer will take precedence over any and all printed material. Auctioneers and their staff are not responsible for accidents. **OUT-OF-AREA BUYERS:** Please bring letter of credit. Lunch on grounds.



Bird Island, MN • (320) 365-4120

Call Today For  
Your Auction!



**AUCTIONEERS:**  
OFFICE - (320) 365-4120  
ALLEN HENSLIN 65-57  
LaDON HENSLIN 65-25

**BRAD DALLMANN**  
(320) 905-6226

**FRANK ROERING**  
(320) 290-8490

FOLLOW US



[www.henslinauctions.com](http://www.henslinauctions.com)