

# Auction

**AUCTION NOTES:**

It gives Henslin Auctioneers great pride the Retzlaff Family has selected us to conduct this large auction. We will begin with Real Estate, Household, Shop, Vehicles & Misc. See you at the Auction!

-Henslin Auctioneers

**COSMOS, MN • Tuesday, April 30, 2019 • 10:00 a.m.**

**169 Acres of Prime Renville County Farm Land, Lake Shore & Building Site, Located In Section 5 Boon Lake Twp, T-116, R-31-W**

Directions: Cosmos - Three miles south on State Highway 4, 4½ miles east on County 7. South side of road. Watch for Henslin Auction Signs.

**REAL ESTATE**

Parcel 1: 161.84± Acres, Prime Renville Co. Farm Land with Boon Lake Shore Line, Tar Road Access, Section 5 Boon Lake TWP. Renville Co. T-116, R31W, CPI 92.2

Parcel 2: 7.22± Acres Building Site

**FARM SITE FEATURES:**

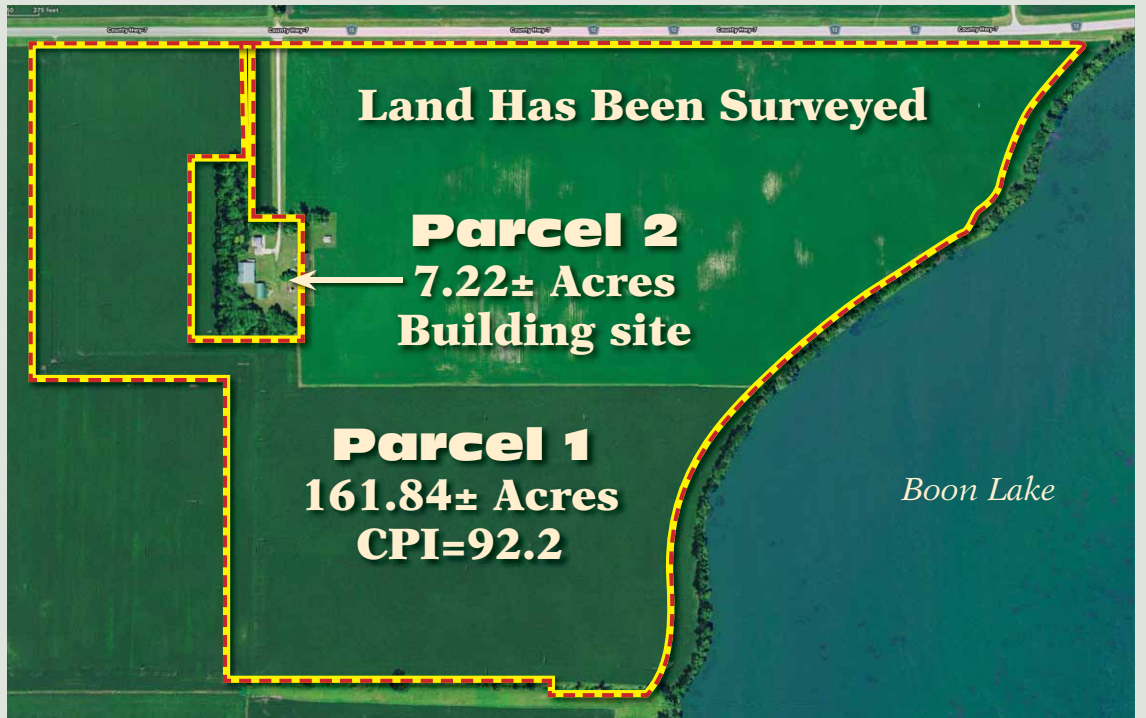
- |   |  |
|---|--|
| 7.22± Acres, Four Bedroom Home & Outbuildings               | 23'x24' Attached 2 Stall Garage  |
| 14'x14' Living Room, Hardwood Floor                         | Central Air  |
| 14'x14' Dining Room, Hardwood Floor                         | Forced Air Heat, Dual Heat, Fuel Oil Or Electric                         |
| 14'x14' Kitchen   | Steel Siding   |
| 9'x14' Main Floor Master Bedroom                            | Appliances Included: Frigidaire Gallery 2 Door Top Fridge, Lower Freezer |
| 12'x14' Upstairs Bedroom #1, Walk In Closet, Hardwood Floor | GE Glass Top Electric Range  |
| 13'x14' Upstairs Bedroom #2, Walk In Closet, Hardwood Floor | GE Microwave   |
| 9'x14' Upstairs Bedroom #3, Walk In Closet, Hardwood Floor  | Newer Water Softener   |
| 5'x10' Main Floor Full Bathroom                             | Newer Electric Water Heater  |
| 8'x11' Upstairs Bathroom, No Sink                           | Added 2" Foam Insulation In Attic  |
| Newer 20 Year Old Block Basement                            | Newer Windows  |
| 11'x12' Entry/Breezeway                                     | November 2017 New Septic System  |
|   | 60'x80' Machine Storage, 13'x23' Sliding Door                            |
|   | 40'x60' Machinery Storage, (2) 11'x15.5' Sliding Doors                   |
|   | Livestock Barn   |
|   | Tar Road Access  |

**OPEN HOUSE DATES:**

Monday, April 15 • Noon to 1:00 p.m.

Monday, April 22 • 5:00 to 6:00 p.m., One Hour Prior To Auction.

**REAL ESTATE TERMS:** Parcel 1 Land \$30,000 Certified Funds; Parcel 2 Farmsite \$10,000 Certified Funds Down Day of Auction. Remainder due upon closing. Buyers premium will apply to Real Estate only. Call Henslin Auctioneers for more information: 320-365-4120



**TRACTOR, JD MOWER & FARM EQUIPMENT**

- |  |   |   |
|--|---|---|
| JD 3010 Gas, WF, Syncro Range, Cab, New 15.5-38's, 540 PTO, 2,849 Hours Showing, 2 Hyd, With HYD.Schwartz Loader, Bought New | Horse Drawn JD Sickle Mower   | 36" Pull Type Garden Tiller With Gas Engine |
| JD 1420 Series II Front Mount Mower, 7 Iron II 72" Deck, 342 Hours Showing, Bought New                                       | Horse Drawn Spring Tooth Spike Tooth Drag   | (2) Homemade Flat Racks on Gears            |
| IH 4000 12' Swather, Crimper, 6 Cylinder, Bought New, S/N# 1310069C002958  | Case 10' Grain Drill With Grass On Steel  | Homemade Log Splitter                       |
| IH 37 Small Square Baler, Bought New   | JD 12' Pull Type Tandem Disc, On Wheels   | Approx 40' Grain Elevator                   |
| Allied 7' Single Auger Snow Blower, HYD Spout, S/N# 8510795, Bought New  | JD Hay Crimper, Pull Type   | 15' Single Disc With Wings                  |
| IH 710 4-18's Plow   | Oliver 5 Bar Hay Rake, Pull Type  | 2 Wheel Homemade Trailer, SNT               |
| 1000 Gallon Liquid Manure Tank On Trailer  | 1 Row Case Pull Type Silage Chopper   | 750-20 Truck Tires, Like New                |
| Pull Type Road Patrol, 4 Steel Wheels  | IH 18' Field Cult. 2 Bar Harrow   | Surge Milk Pump                             |
|  | JD R64 4 Row Cult   | Hay Loader Trolley                          |
|  | 500 Gallon Poly Tank On Home-made Walking Tandem Axle Trailer, 5.5 HP Transfer Pump | JD Planter For Parts                        |
|  | 300 Gallon Field Sprayer, Poly Tank, PTO Pump, On Transport                         | Corn Crib                                   |
|  | 300 Gallon Field Sprayer, Fiberglass Tank On Transport                              | Steel Fence Posts                           |
|  | Fimco 25 Gallon Sprayer, Boom, Wand On Cart   | Chicken Coop                                |
|  |   | (2) 300 Gallon Fuel Barrels On Steel Stands |
|  |   | Scrap Iron                                  |
|  |   | Grove Machinery                             |
|  |   | <b>MUCH MORE!</b>                           |

**SHOP, ANTIQUE, COLLECTIBLES & MISCELLANEOUS**

- |   |                                   |
|---|-----------------------------------|
| Jet Band Saw                              | China Hutch                       |
| Jet 16 Speed ½ HP Floor Model Drill Press | (2) Curio Cabinets                |
| Welding Table                             | Several Wood Chairs               |
| Arcon 20 Ton Manual Shop Press            | Kitchen Table, 3 Leaves, 6 Chairs |
| Craftsman Rollin Tool Boxes               | 6 Drawer Chest Of Drawers         |
| Shop Vac                                  | Brass Bed Head & Foot             |
| Hand Tools                                | End Tables                        |
| Garden Tools                              | Gas Grill                         |
| Steel Wheels                              | Office Chairs                     |
| Cream Cans                                | File Cabinets                     |
| Maytag Wringer Wash Machines              | Several Exercise Bikes            |
| Screw Jacks                               | Plywood & Lumber                  |
| Portable Air Compressor                   | Green Shingles                    |
| Antique 5 Drawer Chest with Mirror        | Knipcos For Parts                 |
| Antique 4 Drawer Chest with Mirror        | Stainless Stove Pipes             |
| Antique Kitchen Table, 5 Leaves, 6 Chairs | Minnow Trap                       |
| Antique Rocker                            | <b>MUCH MORE!</b>                 |

**CAR, PICKUP & TRAILER**



- 2010 Mercury Ultimate Edition Grand Marquis LS, Auto, 4.6 Liter, Power Seat & Windows, Leather, 25,949 Miles Showing, Bought New
- 1993 Ford F-150 Ext Cab Pickup, 4x4, Auto, 136,620 Miles Showing, Bought New
- 1949 Chevy 4100 1½ Ton Single Axle Grain Truck, Wood Box, Hoist. 6 Cylinder, 700-20's, 73,740 Miles Showing
- 1987 Homemade App. 8' x 15' Two Wheel Trailer

**WE'LL SEE YOU AT THE AUCTION!**

## THE ALVIN RETZLAFF TRUST

53149 Meeker Renville Line Road • Cosmos, MN 56228



Bird Island, MN (320) 365-4120



Call Today For Your Auction!

Allen Henslin 65-57  
LaDon Henslin  
Brad Dallmann  
Frank Roering  
RE Agent: Laura Posl  
Cell: 320-262-4893  
Henslin Real Estate and Land, LLC  
Broker • Lic. #40452768

FOLLOW US



LIVE ONLINE BIDDING POWERED BY:  
HENSLIN AUCTIONS, INC. & PROXIBID

FOR MORE PICTURES, AUCTION CATALOG, MORE INFORMATION, AND OTHER AUCTIONS VISIT US AT:

[www.henslinauctions.com](http://www.henslinauctions.com)

**Auction Terms:** Cash, Good bankable check, Credit cards. All items sold as-is, where-is with no warranties or guarantees of any kind. All items must be paid for at the conclusion of auction prior to removal from location. MN sales tax law will apply. Any verbal announcement made by auctioneer will take precedence over any and all printed material. Auctioneers and their staff are not responsible for accidents. Out of area buyers please bring letter of credit. Lunch on Grounds.

Designed and Printed by the Cannon Falls Beacon 800.263.3991