

MULTI PARCEL RENVILLE COUNTY REAL ESTATE AUCTION

FAIRFAX, MN • FRIDAY, SEPTEMBER 13, 2019 • 10:30 A.M.

±148.30 Acres of Prime Renville County Farmland, All Located In Section 23 & Section 26, Cairo Township, T-112-N, R-32-W

**Land Has Been Surveyed!
CPI Ratings = 92.5 & 93.3!!
Good Heavy Renville Co. Soils.**

PARCEL 1

75.69 Acres Prime Renville County Farmland in Section 23 & Section 26, Cairo Township 112, Range 32

PARCEL 2

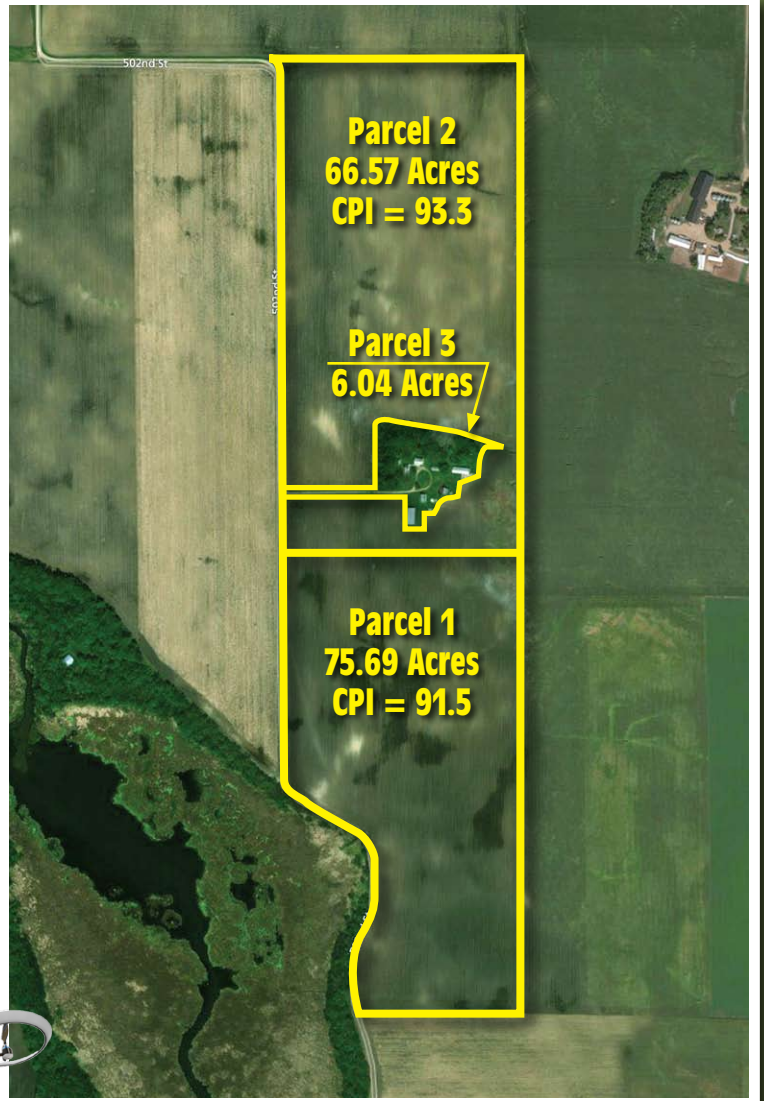
66.57 Acres Prime Renville County Farmland in Section 23, Cairo Township 112, Range 32

PARCEL 3

6.04 Acres Renville County Building Site in Section 23, Cairo Township 112, Range 32

**AUCTION TO BE HELD AT
Fairfax Community Center,
300 Park Street South • Fairfax, MN 55332**

**FOR MORE PICTURES, AUCTION INFORMATION,
COMPLETE LISTING, AERIAL DRONE VIDEO, OTHER
AUCTIONS, VISIT US AT WWW.HENSLINAUCTIONS.COM**



Estelle Rieke Estate



Bird Island, MN (320) 365-4120

Call Today For Your Auction!



Allen Henslin 65-57
Cell: 320-979-1808
LaDon Henslin
Brad Dallmann
Frank Roering
Real Estate Agent
Laura Posl
Cell: 320-262-4893

Broker: Henslin Real Estate and Land, LLC • Lic. #40452768

FOLLOW US



CALL HENSLIN AUCTIONS FOR LAND BOOKLET TODAY! (320) 365-4120

Auction Terms: To attend auction and receive a bidding number, buyer's must present auction company with certified funds of \$20,000 for each parcels 1 & 2; \$5,000 down for parcel 3. This money will be required as a non-refundable down payment for this parcel when signing the purchase agreement immediately following the auction. Possession of the land will be granted after the 2019 crop is removed. Buyer's Premium will apply. For more information, aerial drone videos and pictures, visit us at www.henslinauctions.com

www.henslinauctions.com

Designed and Printed by the Cannon Falls Beacon 800.263.3991