

PRIME MULTI-PARCEL KANDIYOHI COUNTY FARM LAND

AUCTION

WILLMAR, MN • FRIDAY, NOVEMBER 30, 2018 • 11:00 A.M.

±120 Acres of Prime Kandiyohi County Farmland

±39 Acres in Section 5, Whitefield Twp;

±81.5 Acres in Section 32, Willmar Twp

LAND DIRECTIONS:

Willmar, MN: Two miles south on Highway 71, 2¼ miles west on 60th Ave. S.E., Parcel-1 on south side of road, Parcel-2 on north side of road. (Watch For Henslin Auction Signs!)

GOOD HEAVY KANDIYOHI CO. SOILS LAND HAS BEEN SURVEYED!

CPI RATING:

PARCEL 1: 90.2

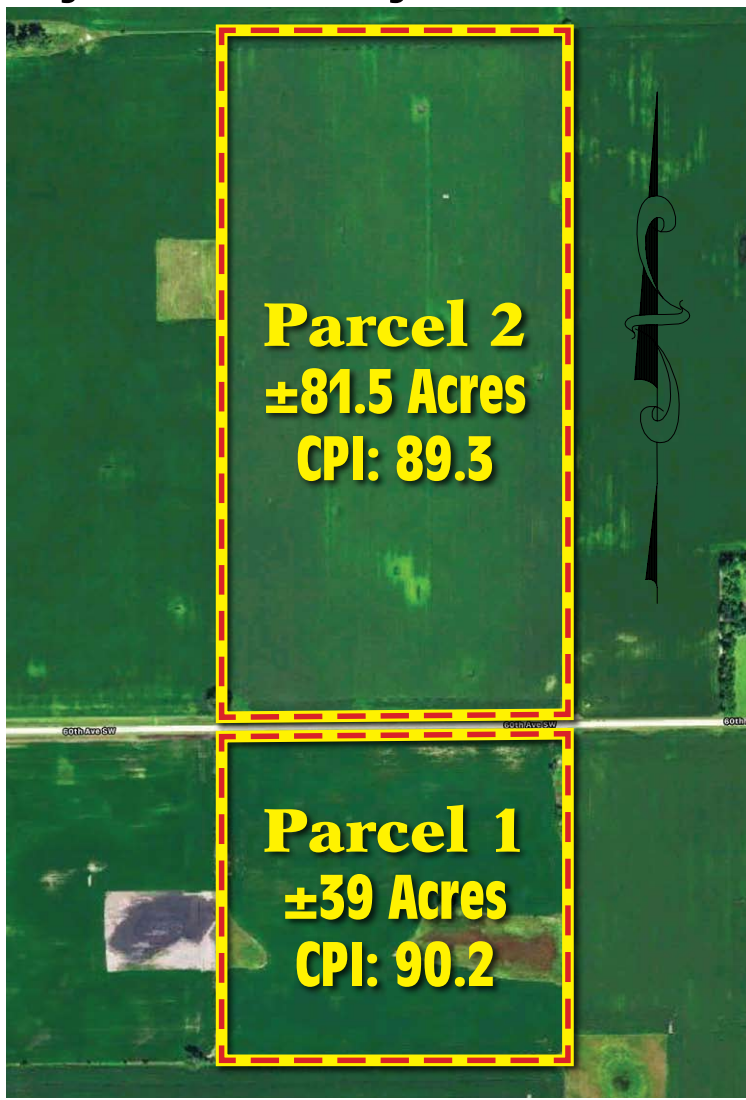
PARCEL 2: 89.3

AUCTION HELD AT:

THE OAKS AT EAGLE CREEK

1000 26th Avenue NE • Willmar, MN

FOR MORE LAND INFO, AERIAL PHOTOS & VIDEO, VISIT US AT WWW.HENSLINAUCTIONS.COM



Elery, Luverne & Norman Schueler



Bird Island, MN (320) 365-4120

Allen Henslin 65-57
LaDon Henslin
Brad Dallmann
Frank Roering
REAL ESTATE AGENT
Laura Posl
Cell: 320-262-4893

FOLLOW US



CALL HENSLIN AUCTIONS FOR LAND BOOKLET TODAY! (320) 365-4120

Auction Terms: To attend auction and receive a bidding number, buyers must present auction company with certified funds of \$20,000 per parcel. These funds will be require as non-refundable earnest monies for this parcel at the signing of the purchase agreement immediately following the auction. Possession will be granted after the 2018 crop has been removed. Buyer's premium will apply. Richard Ronning will be the seller's closing attorney. Closing will be on or before Tuesday, January 15, 2019. For more information, aerial drone video and pictures, visit us at www.henslinauctions.com or call (320) 365-4120.

www.henslinauctions.com

Designed and Printed by the Cannon Falls Beacon 800.263.3991

Henslin Real Estate and Land, LLC Broker • Lic. #40452768