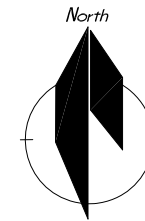


This is a survey of:  
part of:  
**W<sup>1</sup>/<sub>2</sub> of the SE<sup>1</sup>/<sub>4</sub>**

Located in:  
**Section 32, T119N-R35W, Willmar Township,  
Kandiyohi County, Minnesota**

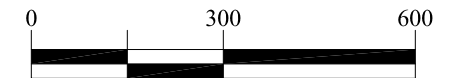


This drawing prepared by:

**Bonnema Runke Stern Inc.**

Professional Land Surveyors  
1809 22nd St SW - Suite 104  
Willmar, MN 56201  
Office (320) 231-2844 Fax (320) 231-2827

Requested by: **Elery Schueler**  
317 Bernard St  
Willmar, MN 56201



**LEGEND**

- Found Iron Monument from former survey
- Bonnema Runke Stern Placed Capped Iron Monument
- ⊙ Cast Iron Monument
- ⊙ Placed Monument on the property line at a position which is offset from the actual property corner. **Please Note** that the property boundary distances shown on this survey are measured to the actual property corner location, not the offset monument.
- ⊙ Placed Monument on the property line at a position which is offset from the actual property corner. **Please Note** that the property boundary distances shown on this survey are measured to the actual property corner location, not the offset monument.
- Approximate Right of Way Line

All Documents referred to on this survey can be found on file in the office of the Kandiyohi County Recorder.

Bonnema Runke Stern Inc. is not giving a title opinion or abstract of this parcel. We suggest that you contact your attorney or a title insurance company for that purpose. Easements or neighboring deed conflicts may exist which affect this parcel and are not shown on this survey.

The distances shown from improvements to the property lines are shown for references purposes only and are NOT intended for determining the property line location. Property corner monuments shall always be used when establishing the property line.

I HEREBY CERTIFY THAT THIS SURVEY, PLAN, OR REPORT WAS PREPARED BY ME OR UNDER MY DIRECT SUPERVISION AND THAT I AM A DULY LICENSED LAND SURVEYOR UNDER THE LAWS OF THE STATE OF MINNESOTA. THE FIELD WORK WAS COMPLETED ON XXXXXXXX XX, 20XX.

Matthew D. Runke

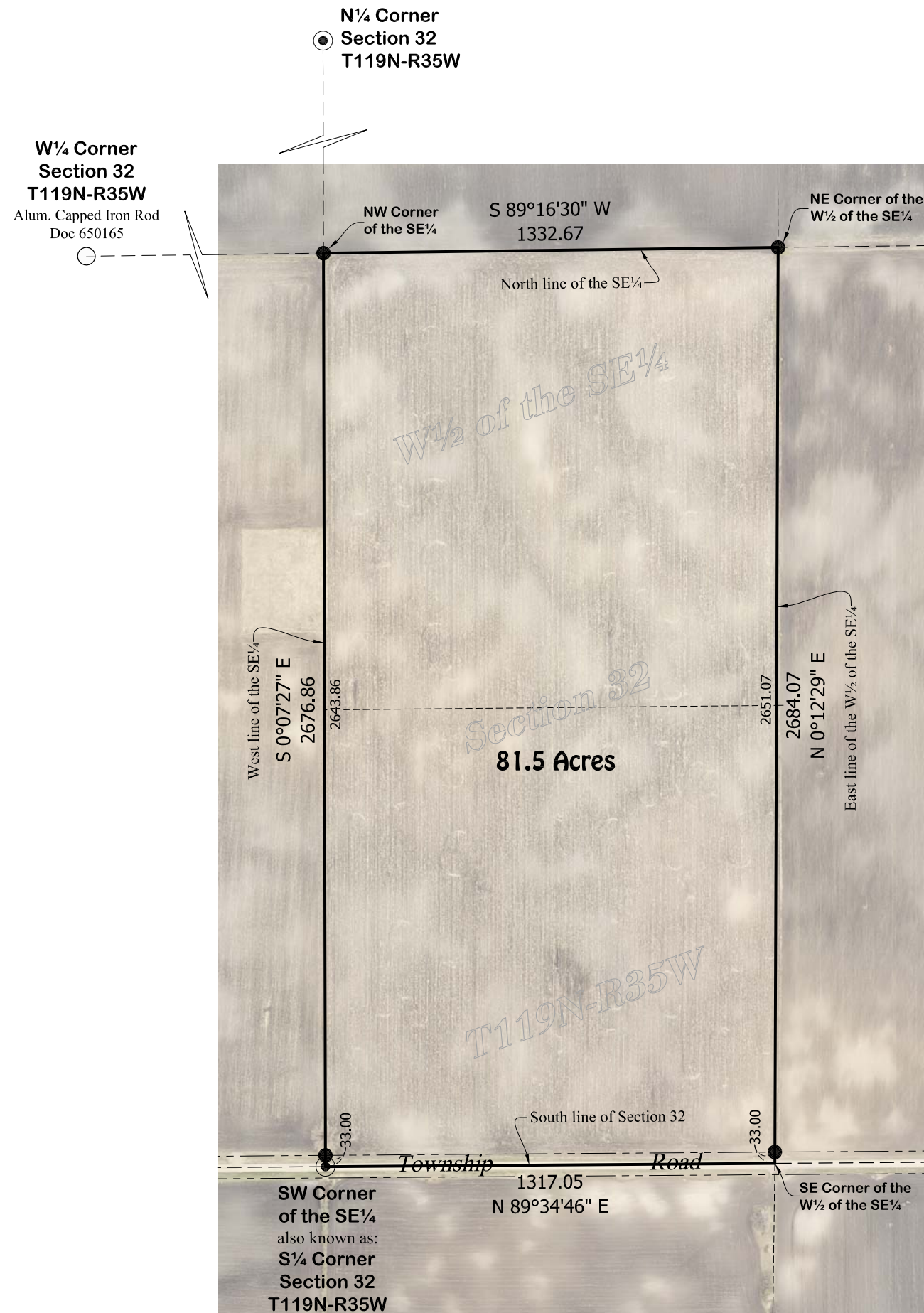
Date October 15, 2018 License No. 46171

**Surveyor's Notice:**

Do to crop in the fields we were unable to locate occupation & uselines along the property lines.

**Existing Description - 81.5 Acres**  
(Part of Document No. 647457)

"The W<sup>1</sup>/<sub>2</sub> of the SE<sup>1</sup>/<sub>4</sub> of Section 32, Township 119 North, Range 35, Kandiyohi County, Minnesota."



**SE Corner Section 32 T119N-R35W**  
Concrete Monument with Alum. Cap

**W<sup>1</sup>/<sub>4</sub> Corner Section 32 T119N-R35W**  
Alum. Capped Iron Rod  
Doc 650165

**E<sup>1</sup>/<sub>4</sub> Corner Section 32 T119N-R35W**

**SW Corner of the SE<sup>1</sup>/<sub>4</sub> also known as: S<sup>1</sup>/<sub>4</sub> Corner Section 32 T119N-R35W**