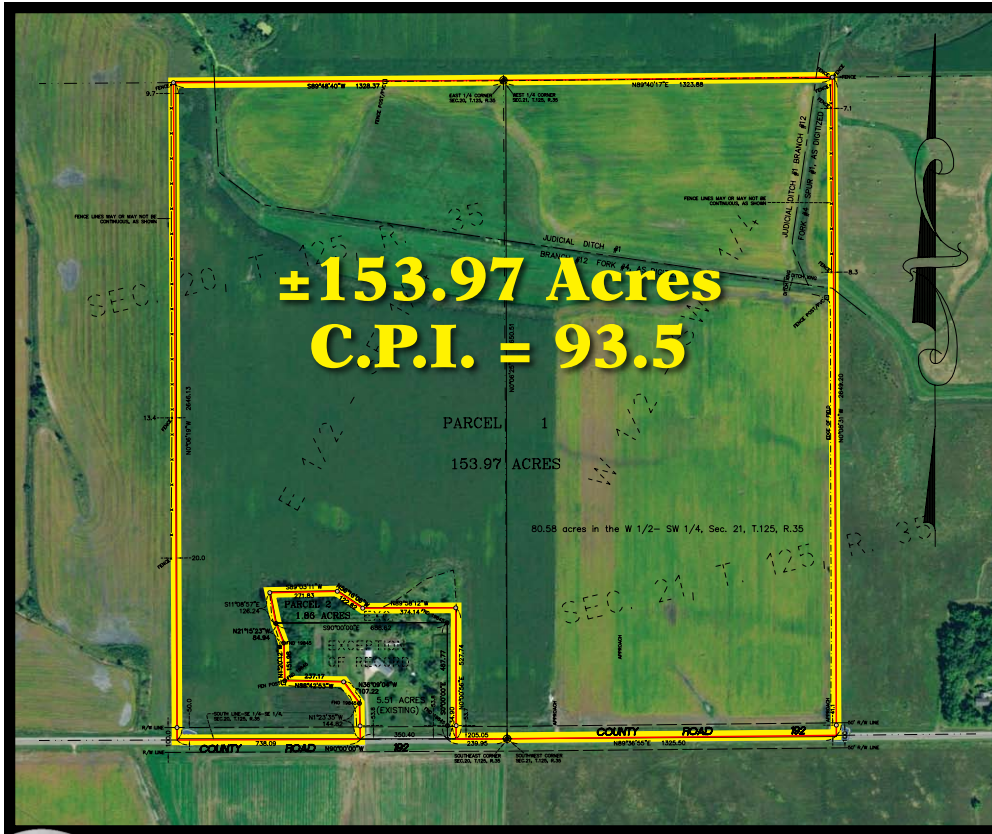


AUCTION

BELGRADE/PADUA, MN • THURSDAY, AUGUST 30, 2018 • 7:00 P.M.

±153.97 Acres of Prime Stearns County Farmland
LOCATED IN SECTIONS 20 & 21, RAYMOND TOWNSHIP, T-125-N, R-35-W



LAND LOCATION:

Belgrade, MN: East on 55 one mile, North on 71 for 12 miles to CR22, take left, land is located 6.5 miles on right (Watch for Henslin Auction signs!)

C.P.I. Rating = 93.5

Good Heavy Stearns Co. Soils
63.67 Acres = 99 C.P.I.
31 Acres = 92 C.P.I.

Land Has Been Surveyed!
Tar Road Access!

AUCTION HELD AT:

PADUA PUB

33945 County Highway 18
Sauk Centre, MN

FOR MORE LAND INFO, AERIAL PHOTOS & VIDEO, VISIT US AT
WWW.HENSLINAUCTIONS.COM

ERIC & STACY STALBOERGER
- OWNERS -



Bird Island, MN (320) 365-4120

Call Today For Your Auction!



Henslin Real Estate and Land, LLC
Broker • Lic. #40452768

Allen Henslin 65-57
Cell: 320-979-1808
LaDon Henslin
Brad Dallmann
Frank Roering
Mid American Auction
Al Wessel
Cell: 320-760-2979
REAL ESTATE AGENT
Laura Posl
Cell: 320-262-4893

FOLLOW US



CALL HENSLIN AUCTIONS FOR LAND BOOKLET TODAY! (320) 365-4120

Auction Terms: To attend auction and receive a bidding number, buyers must present auction company with certified funds of \$30,000. These funds will be required as a non-refundable down payment for this parcel at the signing of the purchase agreement immediately following the auction. Possession will be granted after the 2018 crop has been removed. Buyer's Premium will apply. Mr. Tom Meyer will be the seller's closing attorney. Closing will be on or before Thursday, November 1st, 2018. For more information, aerial drone videos and pictures, visit us at www.henslinauctions.com or call (320) 365-4120.

www.henslinauctions.com

Designed and Printed by the Cannon Falls Beacon 800.263.3991