

# Aerial Map



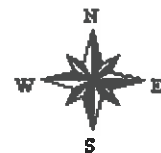
map center: 44° 49' 31.77, -95° 17' 2.12

0ft 837ft 1673ft



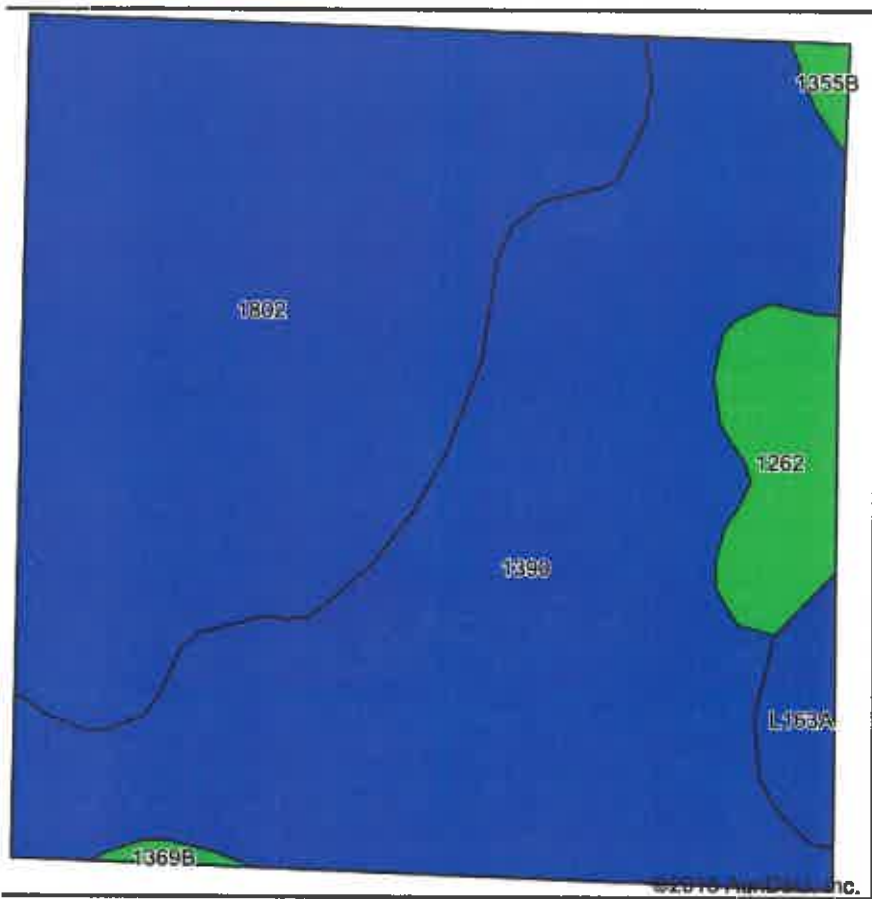
Maps Provided By:  
**surety**  
CUSTOMIZED ONLINE MAPPING  
© AgriData, Inc. 2018 www.AgrIDataInc.com

27-116N-37W  
Renville County  
Minnesota

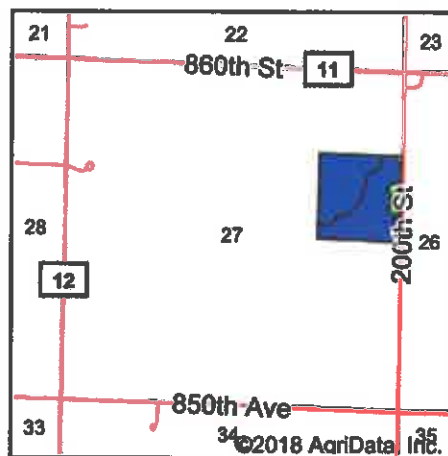


10/15/2018

# Soils Map



Soils data provided by USDA and NRCS.



State: **Minnesota**  
 County: **Renville**  
 Location: **27-116N-37W**  
 Township: **Ericson**  
 Acres: **39.69**  
 Date: **10/15/2018**



Maps Provided By:



Legend Symbol: MN129, Soil Area Version: 14

Code	Soil Description	Acres	Percent of field	PI Legend	Non-Irr Class %c	Productivity Index	Bromegrass alfalfa	Bromegrass alfalfa hay	Cor n	Oats	Reed canarygrass	Soybeans	Spring wheat	NCCPI Soybeans
90	Leen silty clay loam, 0 to 2 percent slopes	19.28	48.6%		llw	90	5.2	4	165	85		50	51	83
02	Calcousta-Okoboji complex, depressional, 0 to 1 percent slopes	17.24	43.4%		llw	81	6	3.3	148	78	5.5	45	47	70
62	Seaforth silt loam, 1 to 3 percent slopes	1.92	4.8%		lls	95								0
63A	Okoboji silty clay loam, 0 to 1 percent slopes	0.91	2.3%		llw	86								77
55B	Amiret-Swanlake loams, 2 to 6 percent slopes	0.21	0.5%		lle	92								80
69B	Crooksford silt loam, 3 to 5 percent slopes	0.13	0.3%		lle	100	6.1	4.7	183	90		55	54	76
<b>Weighted Average</b>						<b>86.3</b>	<b>5.2</b>	<b>3.4</b>	<b>145</b>	<b>75.5</b>	<b>2.4</b>	<b>44</b>	<b>45.4</b>	<b>73.2</b>

Using Capabilities Class Dominant Condition Aggregation Method

Soils data provided by USDA and NRCS.